

Firmware Rollback Switch

IMPORTANT!

Use the Firmware Rollback Switch only if the MP150 fails to operate after a Firmware Upgrade.

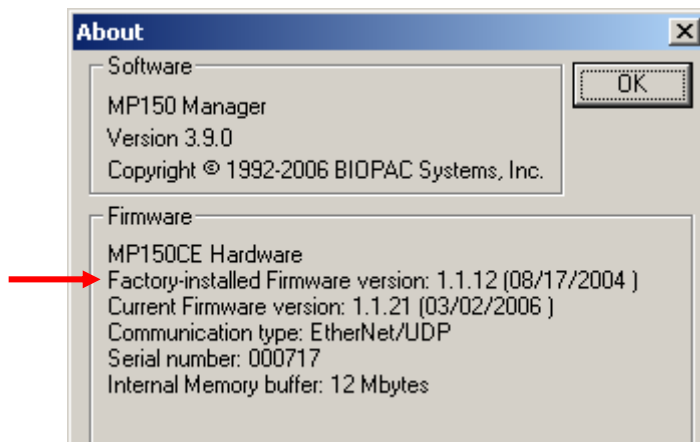
In all other cases, just turn the MP150 power OFF and then ON and check the results of the Start up/Self-Test.

The Firmware Rollback Switch is located on the bottom of the MP150 unit and is recessed to prevent accidental activation.

Activation of the Firmware Rollback Switch will cause the MP150 unit to operate under the factory-installed firmware version. If no upgrades have been performed (the MP150 has only the factory-loaded firmware), the Firmware Rollback Switch will have no effect.

Procedure:

1. Turn the MP150 unit ON.
2. Use **About MP150** in the *AcqKnowledge* software to determine the factory-installed firmware version:



IMPORTANT!

Factory-installed Firmware version 1.1.2 or previous (purchased approximately November 2002 or before) may not reset to a level compatible with UDP communication. In such cases, you will need to install a DLC-compliant version of *AcqKnowledge* and update to UDP in stages; contact BIOPAC for additional support if necessary

Mac OS X: Labeled “Manufacturer’s ROM” and “Current ROM”

3. Turn the MP150 unit OFF.
 4. Turn the MP150 unit upside down and use a small-tipped device (an unfolded paperclip will do) to depress and hold the switch down.
 5. Continue to hold the switch down, and turn the MP150 unit ON.
 - One green and one yellow LED light will begin to blink simultaneously 5 times.
- ✓ While the lights are blinking simultaneously, you may **cancel the Rollback** by releasing the Firmware Rollback Switch. If Rollback is cancelled, the MP150 will try to load the latest firmware upgraded version.
6. When the simultaneous blinking stops, release the switch.
 - The MP150 is now restored to the previous version of firmware.

You can check the firmware version via the MP150 > About MP150 menu item in *AcqKnowledge*.