


NOTE: Biopac Science Lab for Mac OS was discontinued in 2012. This platform is no longer supported.

Audio Adapter Compatibility Review

The Biopac Science Lab MP40 unit connects to the computer via Line-In.



The following information will help you determine whether a computer has a Line In:

Important Audio line in is *not* the same as headphones. 

PC Line In:

Port is usually blue and similar to this:



Mac line in:



Mac models with line in: Core Duo, eMac, G5, iMac lamp/swing arm with 17" or 19" monitor; Mac mini - Core Duo; PowerBook with aluminum case; Power Mac (tower) G5.

Mac models without line in: G3 iMac (candy color/flower power/Dalmatian and CRT monitor); G4 iMac lamp/swing arm with 15" monitor; iBook; PowerBook with titanium case, Mac mini - PowerPC; Power Mac G4

TIP If needed, see the [Mac model guide](#) for more information about your specific computer model.

If a computer does not have a built-in Line-In jack, an external audio adapter can be used. BIOPAC Systems, Inc. has reviewed five external sound adapters.



All of the reviewed adapters are compatible with the MP40 unit, but their ease of use and signal quality vary. The reviewed audio adapters have the following specifications in common:

- Interface with a computer via USB port
- Retail for approximately \$70.00 or less
- Self-powered
- Plug and play with default drivers on Microsoft OS/Mac OS and thus do not require an installation procedure or proprietary driver.

BIOPAC Systems, Inc.
42 Aero Camino, Goleta, CA 93117
(805) 685-0066, Fax (805) 685-0067
info@biopac.com
www.biopac.com

11.22.2017

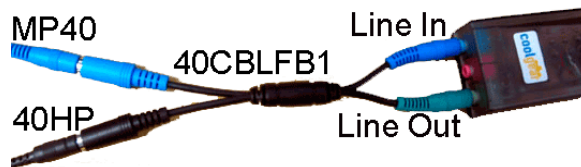
Performance differences are detailed here to help users make an informed choice based on their needs.

Connecting the Stimulus/Response Set



Optional Stimulus/Response Set

If you purchased the optional Stimulus/Response Set (40SR-TA), an additional connection step is required. The Feedback Cable (40CBLFB1) enables output, in the form of sound, in addition to input with the MP40 unit. Basic connection to an external Audio Adapter is shown; specific input locations or port names may be different for each specific adapter.



- **Blue** MP40 cable plugs into **blue** female port on 40CBLFB1
- **Headphones** plug into **black** female port on 40CBLFB1
- **Blue** male portion of 40CBLFB1 plugs into **LINE IN** (Input) on USB audio adapter
- **Green** male portion of 40CBLFB1 plugs into **LINE OUT** (Output) on USB audio adapter

GRIFFIN 2020-IMIC

Order as BIOPAC Part No. **USB-SOUND**



Advantages

- Best signal quality by far, overall best performance in conjunction with MP40

Disadvantages

- Confusing toggle switch between microphone and line-level settings
- Minor clicking noises during recording

Connection advice

- Toggle switch toward microphone icon
- Plug **blue** MP40 input into jack labeled with **microphone** picture as shown

GRIFFIN iMic



Advantages

- Decent signal quality
- Simple cable interface

Disadvantages

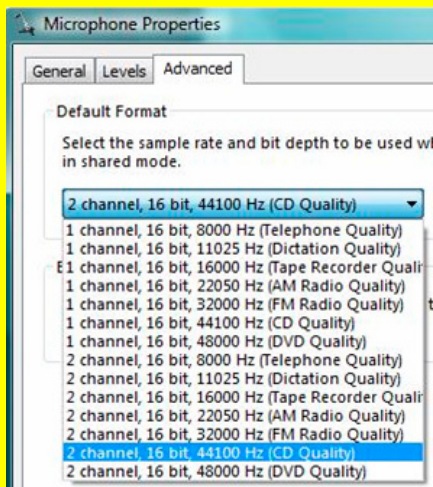
- Low headphone drive resulting in quiet signal
- Fair amount of static during recording

Connection advice

- Toggle switch to LINE
- Plug **blue** MP40 input into **IN** jack as shown

Attention Windows Vista® users:

Windows Vista® users must reset Griffin iMic Audio Properties



Audio Format menu > Advanced tab

The iMic USB audio adapter defaults to 1-channel audio configuration. Lesson 11 Reaction Time requires 2-channel audio.

Prior to initial audio capture setup, the following steps are recommended to adjust the Audio setting.

1. Go to Start > Control Panel > Sound.
2. Click the 'Recording' tab and then double-click 'Microphone' to open 'Microphone Properties'.
3. Click the 'Advanced' tab.
4. From the 'Default Format' menu, select "2 channel, 16-bit, 44100 Hz". (48000 Hz will also work.)
5. Click 'Apply' and then click 'OK'.
6. In the 'Sound' dialog, click the 'Playback' tab.
7. Double-click 'Speakers' to open 'Speaker Properties'.
8. Click the 'Advanced' tab.
9. From the 'Default Format' menu, select "16-bit, 44100 Hz". (48000 Hz will also work.)
10. Restart the computer.



COOL GEAR USBG-X4S

Advantages

- Extreme ease of connection
- Good sound quality

Disadvantages

- Cross-coupling tone present throughout recording

Connection Advice

- Plug **blue** MP40 input into **blue** jack as shown
-



USB Audio Adapter Model GA-AU003

Advantages

- Good signal quality
- Accessible volume control, including mute

Disadvantages

- Quiet signal playback
- Interface to MP40 with Stimulus/Response Package more complicated, requires optional Extension Cable
- Sharp static noise and clicking during recording

Connection Advice

- Plug **blue** MP40 input into INPUT jack as shown
-



USB GEAR USB 5.1 Channel Audio Adapter

Advantages

- Decent signal quality
- Accessible sound control

Disadvantages

- Confusing cable interface with MP40
- Low headphone drive resulting in quiet signal
- Quiet clicks during recording

Connection advice

- Plug **blue** MP40 input into LINE-IN jack as shown
-