

Application Note #AF205 and #PF182

Updated 1-26-06

USB1W Driver for USB v1.1/2.0

This driver update procedure will help you resolve MP acquisition unit communication errors if you are using the USB1W and your computer system uses USB v1.1 or 2.0 with Windows® 98SE, Me, 2000, or Windows® XP Home or XP Pro operating system.

USB v1.1 and v2.0 ports are extremely fast, and the USB1W has a built-in hardware delay, so your computer will likely miss the connection if the existing driver is used. The new driver removes the hardware delay so the USB v1.1 or v2.0 port will always find the device first time.

- Under Windows® XP, the new driver will automatically “broadcast” the driver to all USB ports.
- **Note:** To resolve this delay problem without installing the new driver, make sure the USB1W is connected and then select "Restart" (not "Shutdown") from the **Start** menu. You will have to restart each time you boot your computer until you install the new driver.

This procedure is based on Windows® XP but should be similar under Windows® 98SE, Me, 2000.

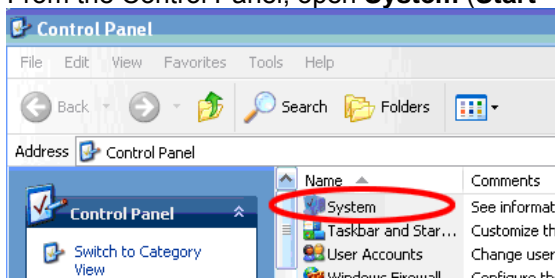
This update is a two-step procedure — you will 1) download the USB1W_Driver.zip file and 2) install the new driver.

STEP 1 — Download the USB Driver ZIP file

1. Download the USB1W_Driver.zip file and save it to your desktop.
2. Open the USB1W_Driver.zip file from your desktop and extract all files, saving the unzipped folder to your desktop.

STEP 2 — Install the new driver

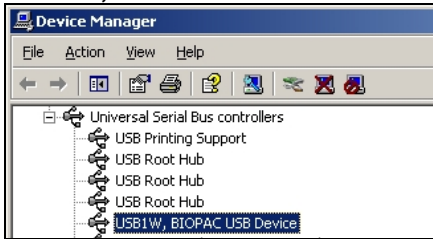
1. Confirm that the USB1W is plugged into your computer's USB port.
2. From the Control Panel, open **System (Start > Control Panel > System)**.



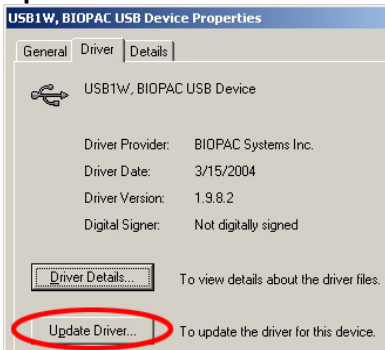
3. In the System Properties box that opens, select the **Hardware** tab and click **Device Manager**.



4. Double-click **Universal Serial Bus controllers** to expand the sub-menu, and then double-click **USB1W, BIOPAC USB Device**.

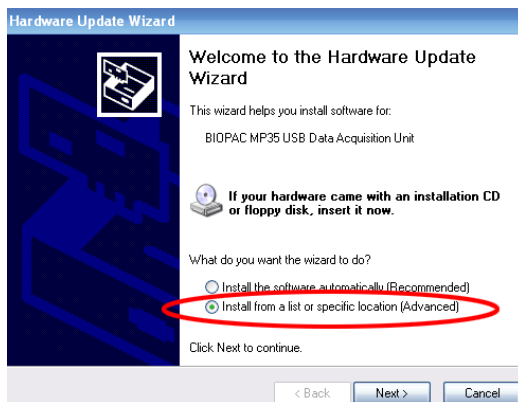


5. In the USB1W, BIOPAC USB Device Properties box that opens, select the **Driver** tab and click **Update Driver...**

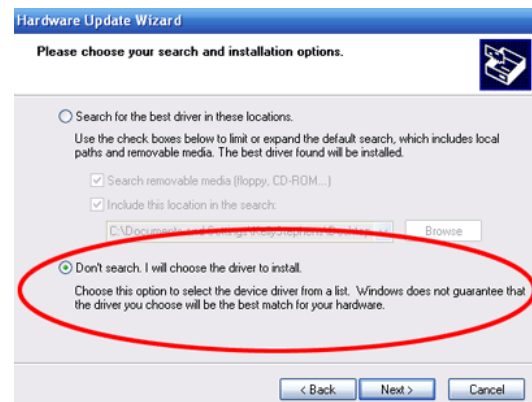


6. **Choose to install from a specific location instead of allowing Windows to search for it.**
 - If you receive a prompt asking you whether to allow Windows to search for the software, select **No, not this time**.

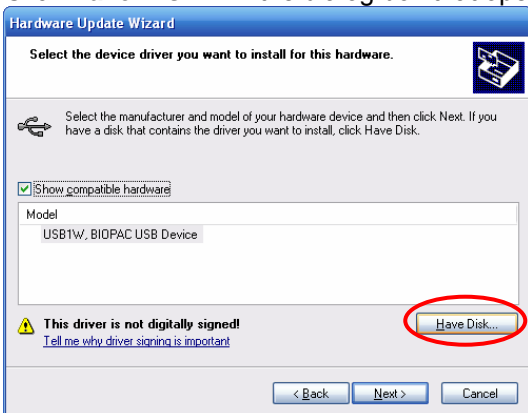
- a. Select **Install from a list or specific location (Advanced)** in the Hardware Update Wizard dialog box and click **Next**.



- b. In the next dialog box that opens, select **Don't search. I will choose the driver to install**. Click **Next**.

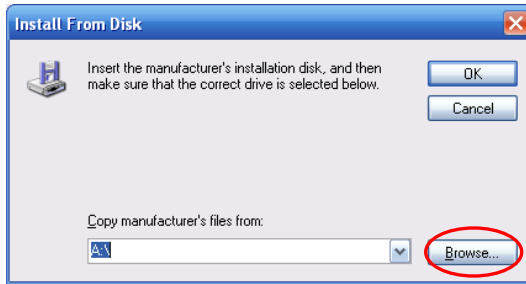


7. Click **Have Disk...** in the dialog box that opens.

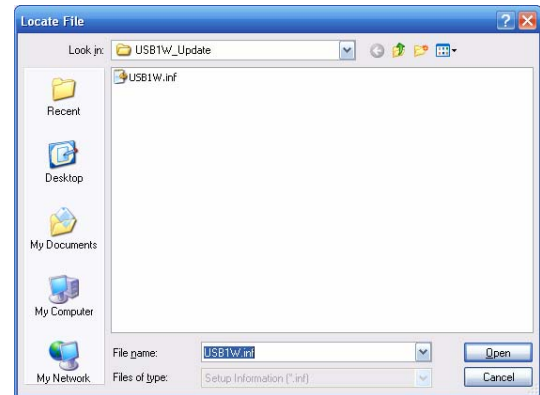


8. Select the USB1W.inf file to install from disk.

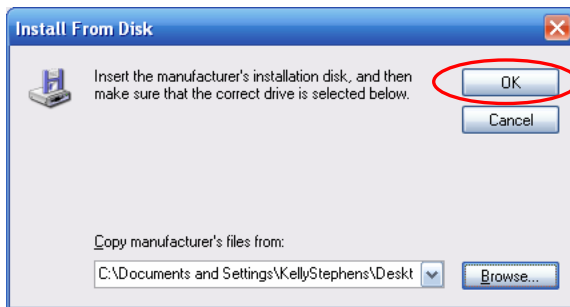
a. Click **Browse...** in the Install From Disk dialog box.



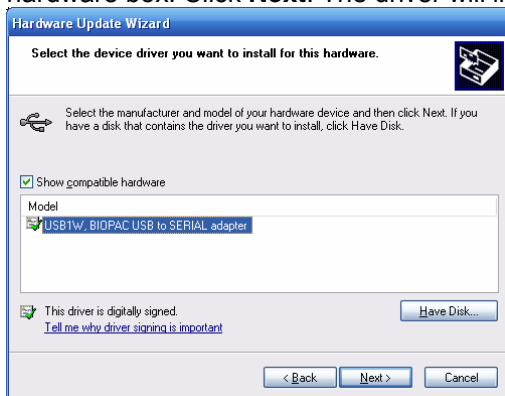
b. In the Locate File dialog box, locate the **USB1W_Update** folder (unzipped and saved on your desktop in **STEP 1** and select the **USB1W.inf** file. Click **Open**.



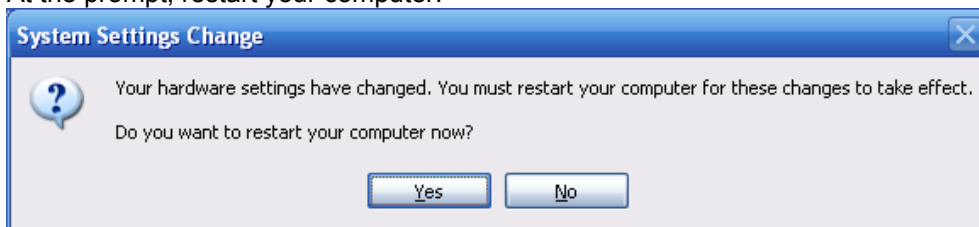
c. In the Install From Disk prompt, click **OK**.



9. USB1W, BIOPAC USB to SERIAL adapter should now be the selected model in the compatible hardware box. Click Next. The driver will install. When prompted, click Finish.



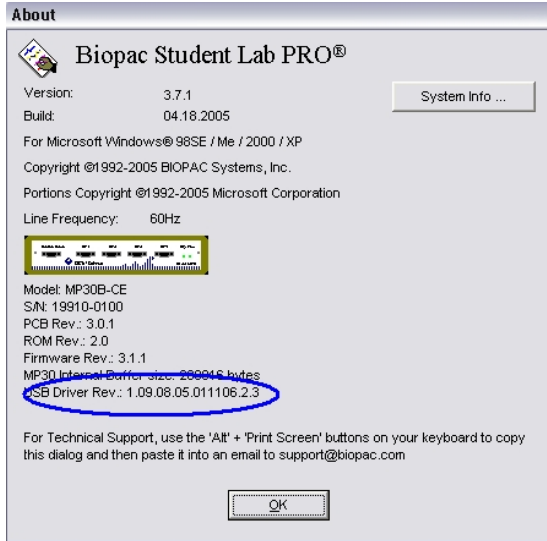
10. At the prompt, restart your computer.



11. **OPTIONAL STEP — CONFIRMING DRIVER UPDATE:** To confirm a successful update, make sure the USB1W is still plugged into your computer's USB port, and connect the MP30/MP100 to the USB1W. Plug the MP unit power cord in, and turn the MP unit ON. Open your installed version of Biopac Student Lab, Biopac Student Lab *PRO*, or *AcqKnowledge*.

a. In BSL or BSL *PRO*, click **Help > About Biopac Student Lab**. The **USB Driver Rev.** number should be **1.09.08.05.011106.2.3**.

b. In *AcqKnowledge*, click **Help > About AcqKnowledge**. The **USB Driver Rev.** number should be **1.09.08.05.011106.2.3**.



or

