



BIOPAC Systems, Inc.

42 Aero Camino
Goleta, Ca 93117
Ph (805)685-0066
Fax (805)685-0067
www.biopac.com
info@biopac.com

Upgrading from BSL Pro 2.xx to BSL Pro 3.0

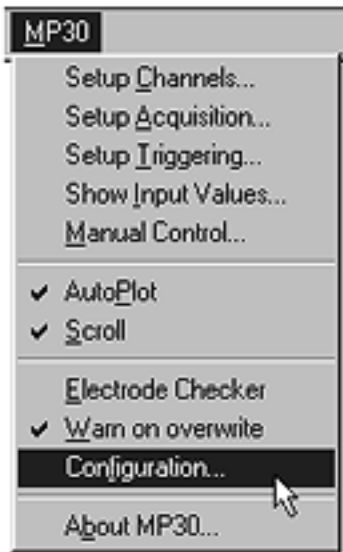
This upgrade procedure assumes you already have a BIOPAC ISA100 card installed in your computer that has been successfully running the MP30 acquisition unit.

You will need to:

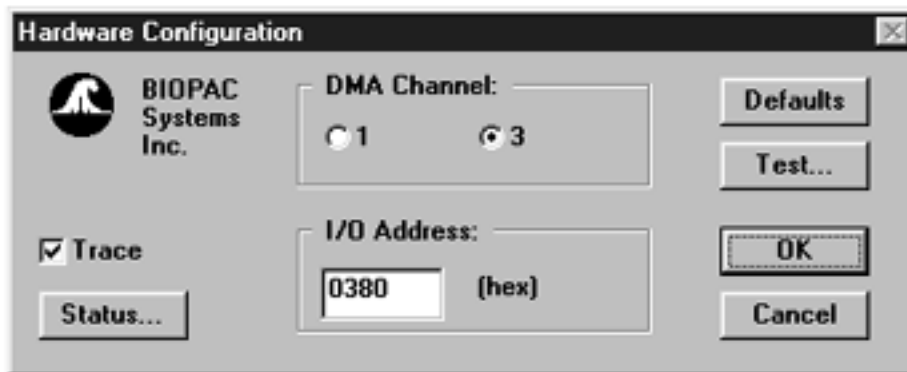
- a. Determine the I/O address of your currently installed ISA100 card.
- b. Insert the Installation disk and run the Installation Wizard.
- c. Change the I/O address software setting using Windows Device Manager.

UPGRADE installation

1. **Read this entire section** so you know what to expect.
Don't go charging off without reading the quick review of the steps before you begin installation.
2. Turn your computer **ON** and start Windows.
Your computer must be running Microsoft Windows 95.
 - It is strongly recommended that you quit all Windows programs before installing the BSL *PRO* software.
3. **Before** you insert the installation disk:
 - a. Activate your current **version (2.xx)** of the Biopac Student Lab *PRO*.
 - b. Click on the **MP30** menu.
 - c. Scroll to select **Configuration**



4. This will generate the "Hardware Configuration" dialog.



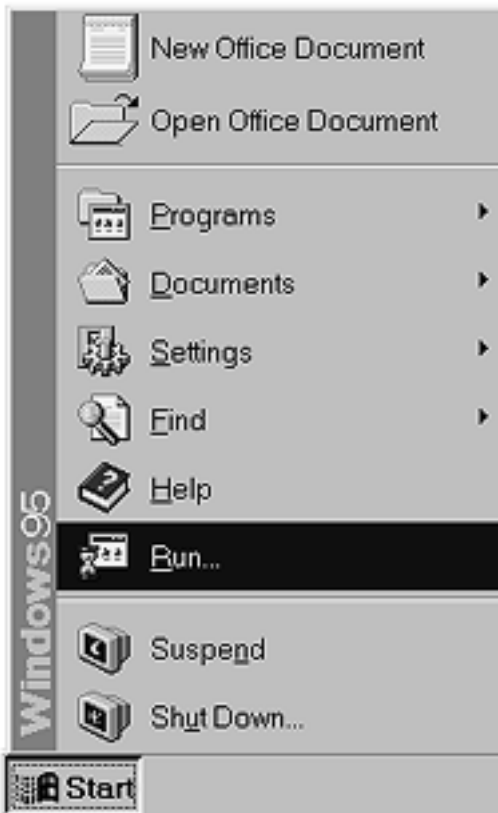
The I/O address in the example is "0380" which is the default setting - your address may be different. You do not need to note the DMA channel.

Locate your I/O address and note it here:

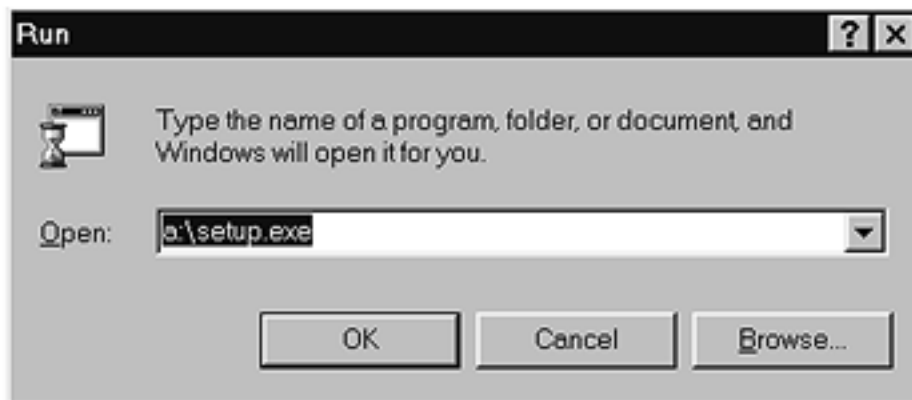
IMPORTANT!

Write the I/O address setting for the ISA100A here for future reference:

5. **Quit** the Biopac Student Lab *PRO V2.xx* program and return to your desktop.
6. Insert the Biopac Student Lab *PRO V3.0* Installation diskette.
7. Click on the **Start** menu and scroll to select the **Run** function.



8. This will generate a **Run** dialog. Type "**A:\SETUP.EXE**" (without the quotes) and click **OK**.



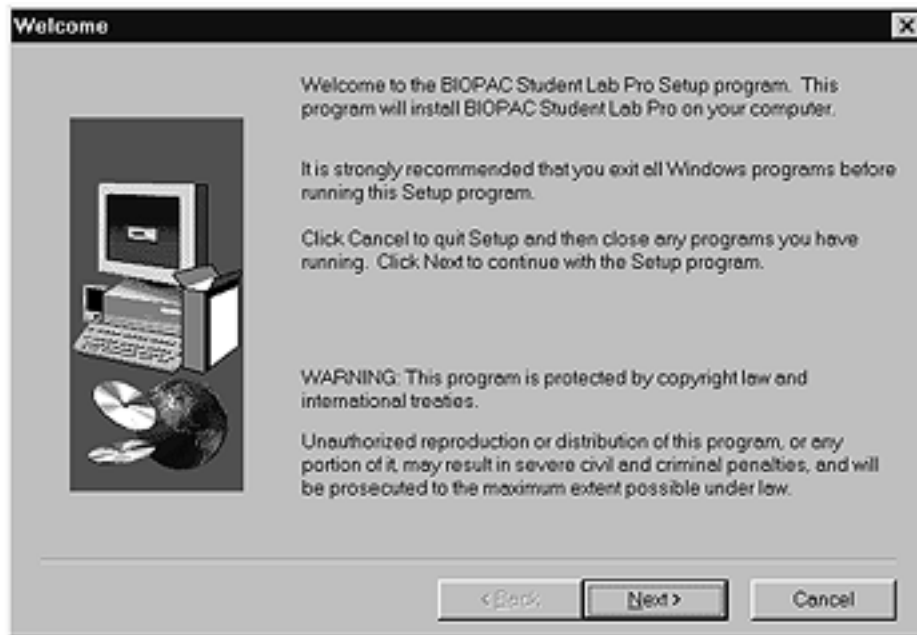
9. This will load the setup program. An "Installation Wizard" program will guide you through the installation process and prompt you with dialog boxes as required. Proceed with installation as prompted in the dialog boxes and accept the defaults except as noted in these instructions.

Not all the dialog boxes are shown here. Pay particular attention to the dialogs mentioned.

- This is the first screen you'll see when the Installation Wizard has been properly activated.

Click on the **Next** button to install the Biopac Student Lab *PRO* software.

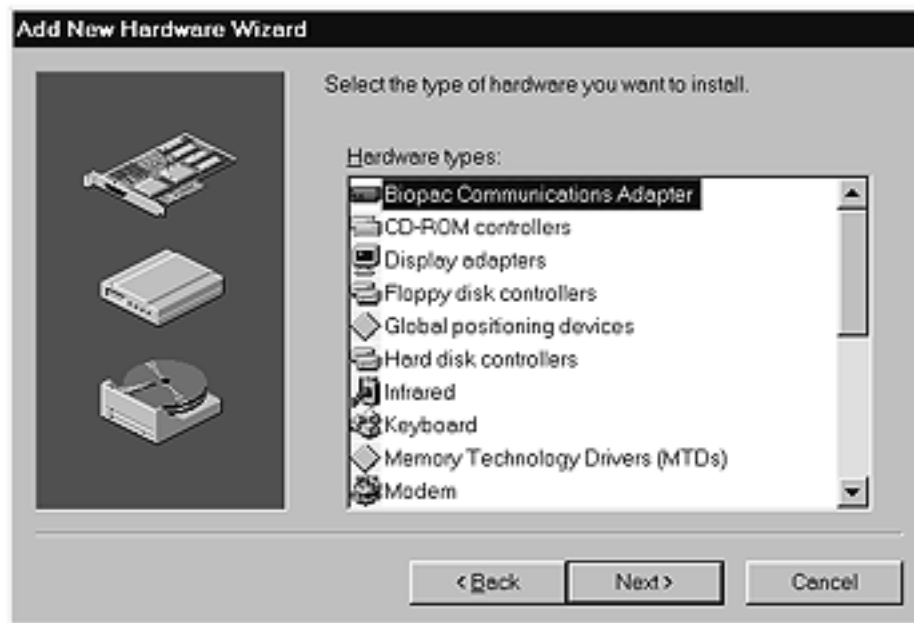
Clicking **Cancel** will terminate the installation process and exit Setup.



10. Do not have Windows search for your new hardware. The Wizard program defaults to "Yes" but you should click in the circle next to "**No**" so a dot appears and then click **Next**.



11. The type of hardware you want to install is the **Biopac Communications Adapter**. Select "Biopac Communications Adapter" and click **Next**.

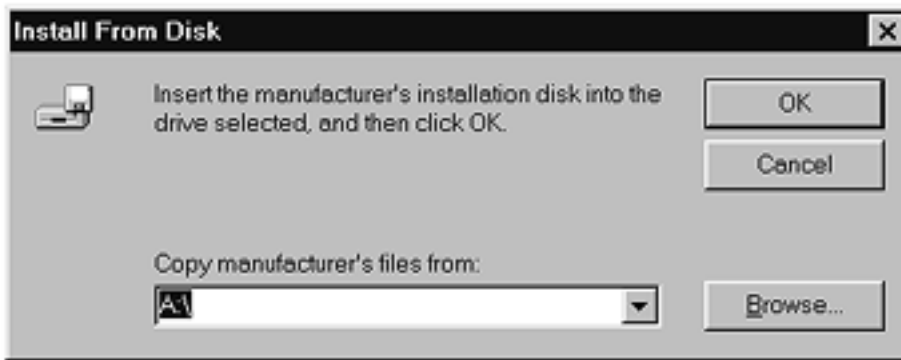


12. The following sequence identifies the manufacturer and model of your hardware. Your screen may not have any models listed, or may not include the BIOPAC ISA100 Card.

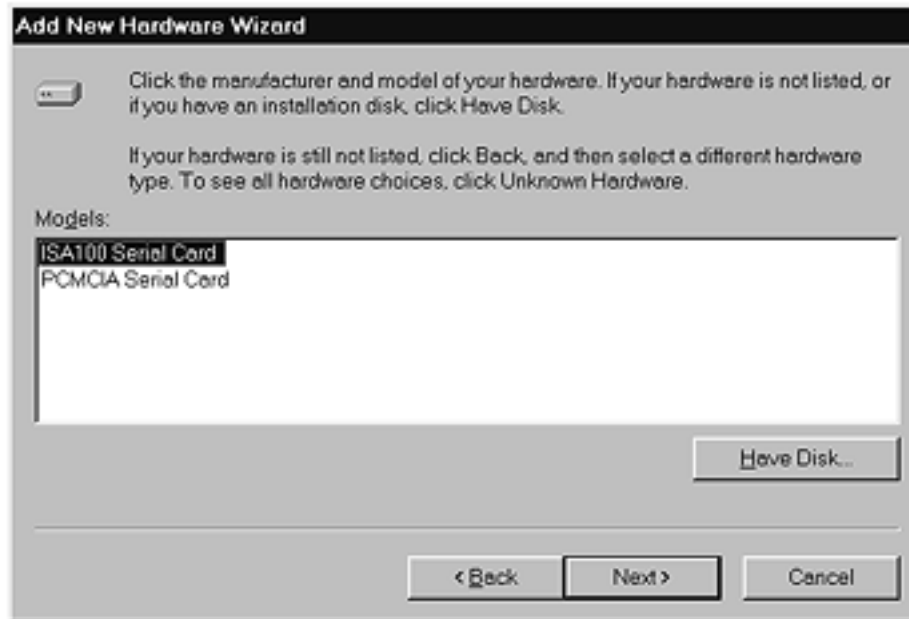
Click the **Have Disk** button.



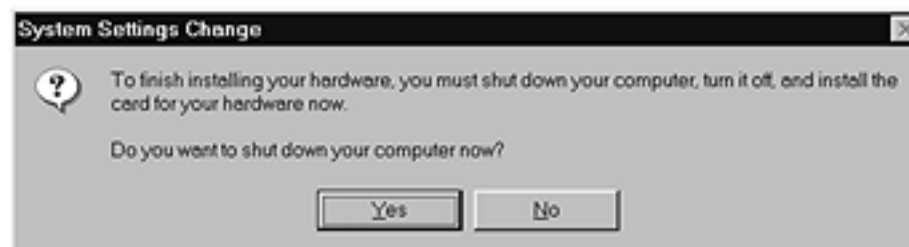
13. Your **Installation Disk** should still be in the drive. If necessary, use **Browse...** to redirect the Wizard to the Installation Disk. Then click **OK**.



14. Select ISA100 Serial Card and click Next.



15. Do **NOT** shut down your computer at this prompt. Click No and finish the Wizard prompts.



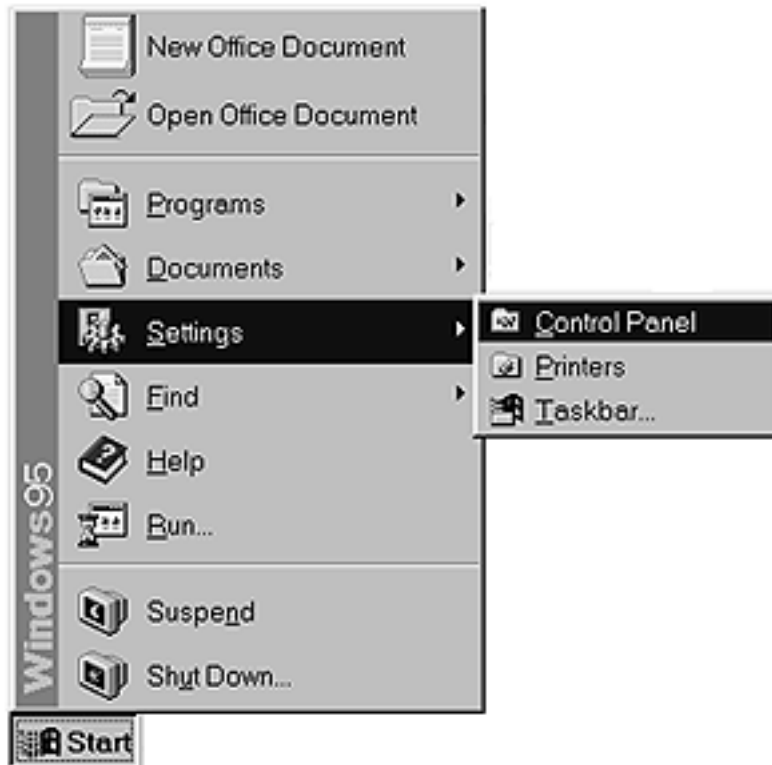
16. The Wizard will locate an available address and generate a schematic of the proper DIP switch settings for your ISA card. Ignore this schematic and click **Finish**.



Do NOT restart your computer at this prompt. You need to use Device Manager to establish the proper I/O address for your ISA100A before restarting. Select the **No** option and click on **Finish**.



17. **Eject** the BSL *PRO* Installation disk.
18. Click on the Windows **Start** menu, scroll to select **Settings**, and then drag to select **Control Panel**.

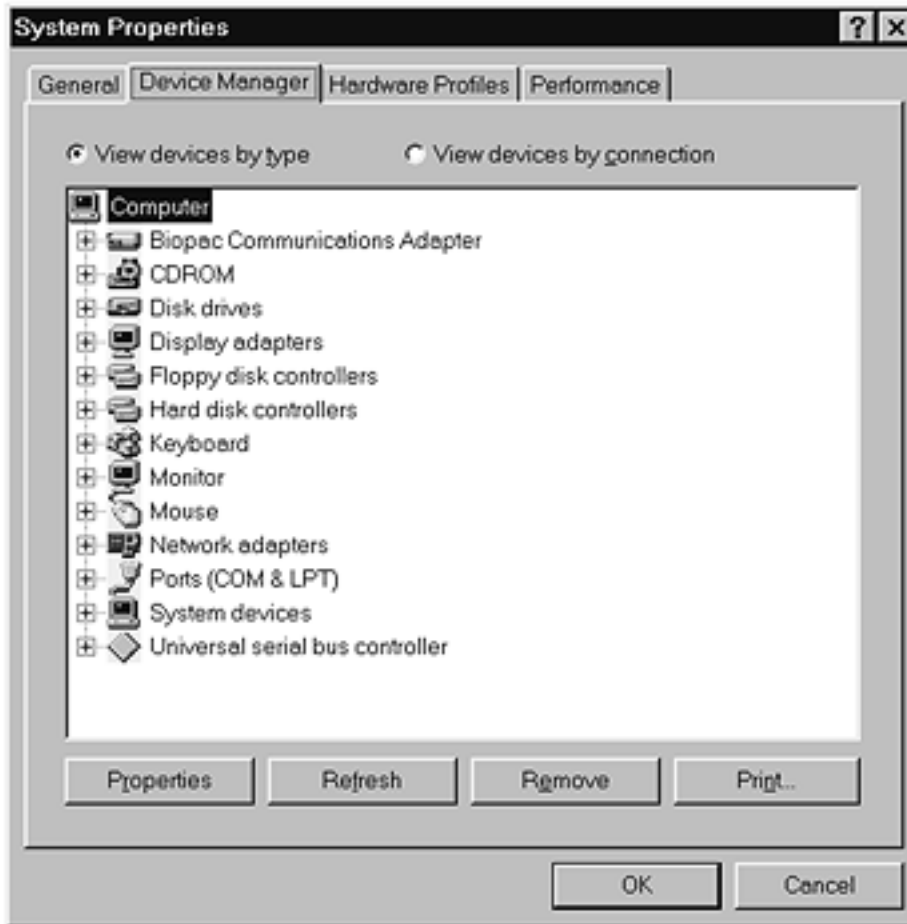


19. Double-click on the **System** icon in the "Control Panel" folder.

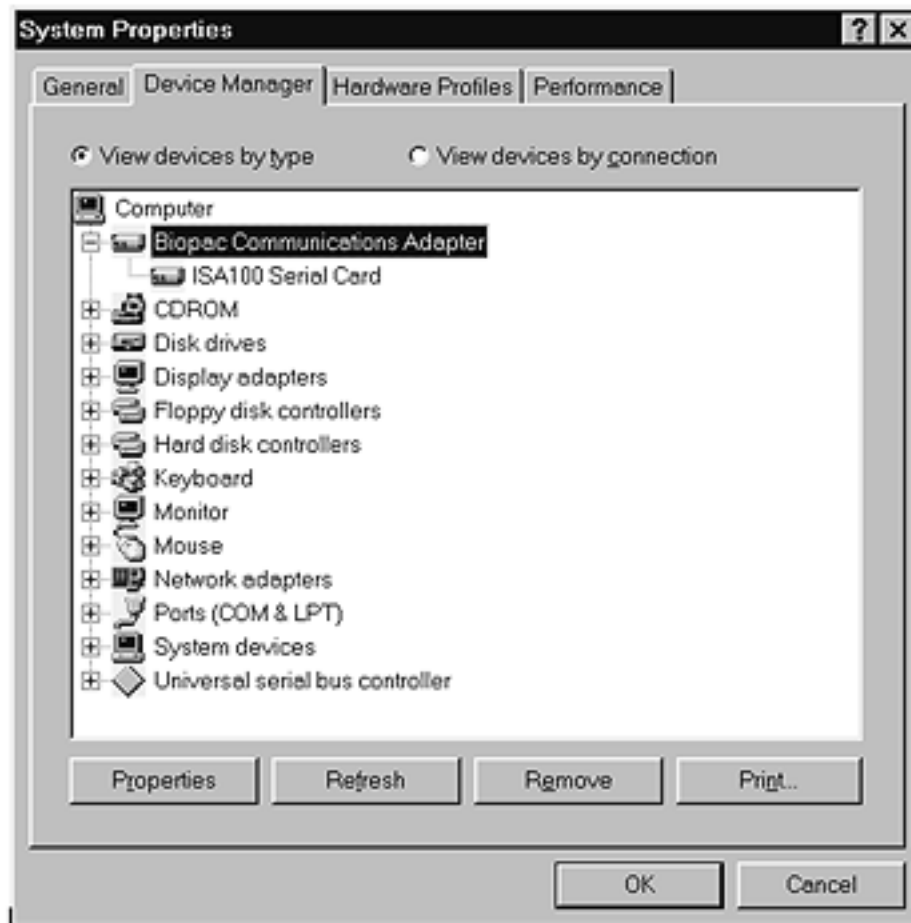


20. This will generate the **System Properties** window.

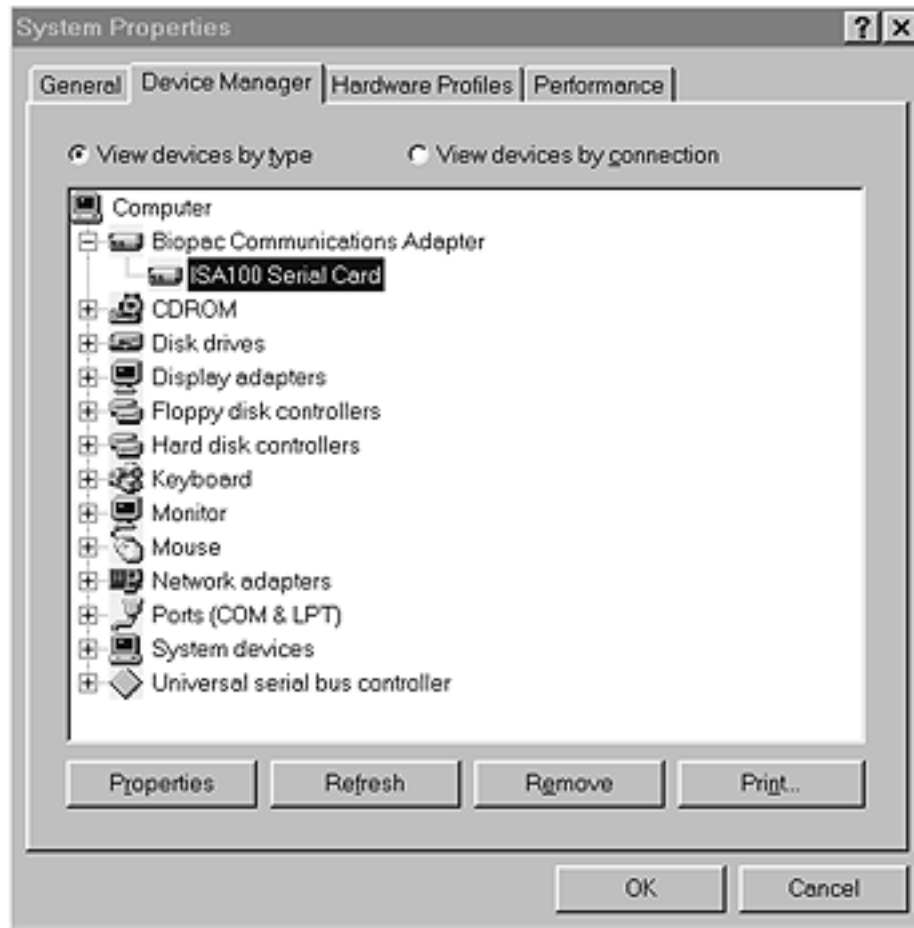
Click on the **Device Manager** tab to bring that screen to the front.



21. Double-click on the **Biopac Communications Adapter** option to select it.



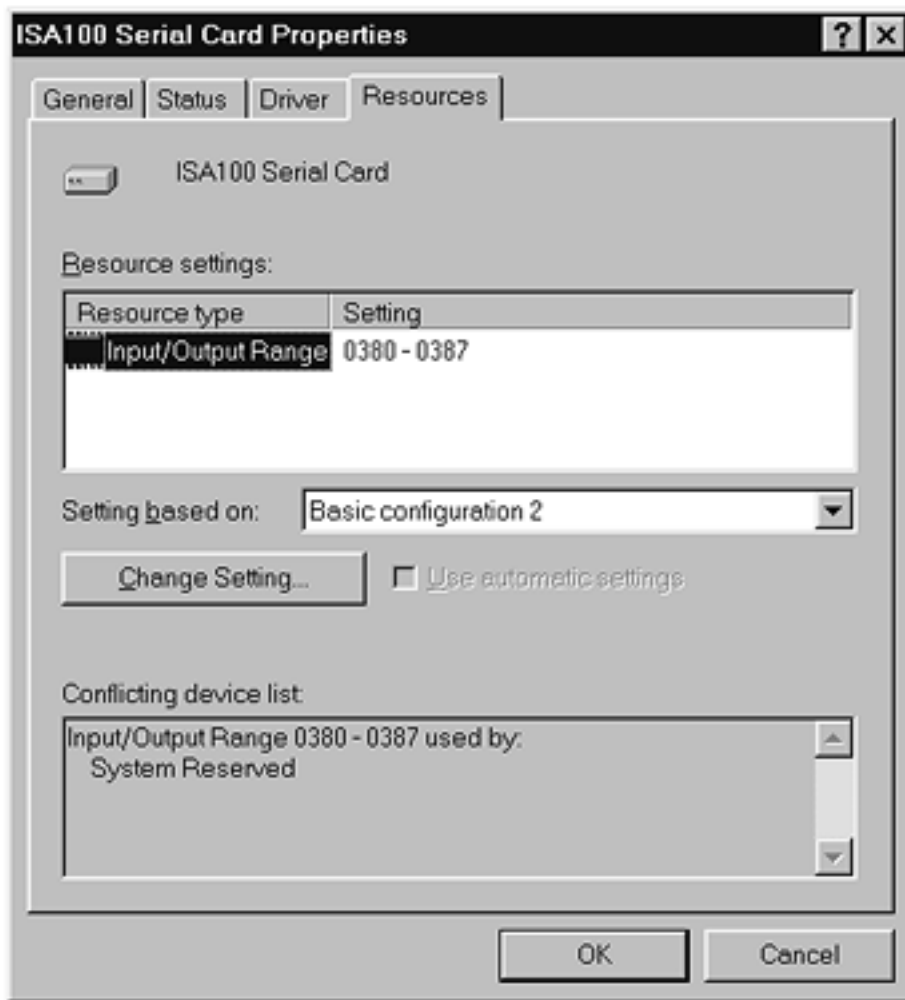
22. Double-click on the **ISA100 Serial Card** option to select it.



23. This will generate an "ISA100 Serial Card Properties" dialog box.

Click on the **Resources** tab to bring that screen to the front.

Then click on the **Change Setting** button (mid-screen).



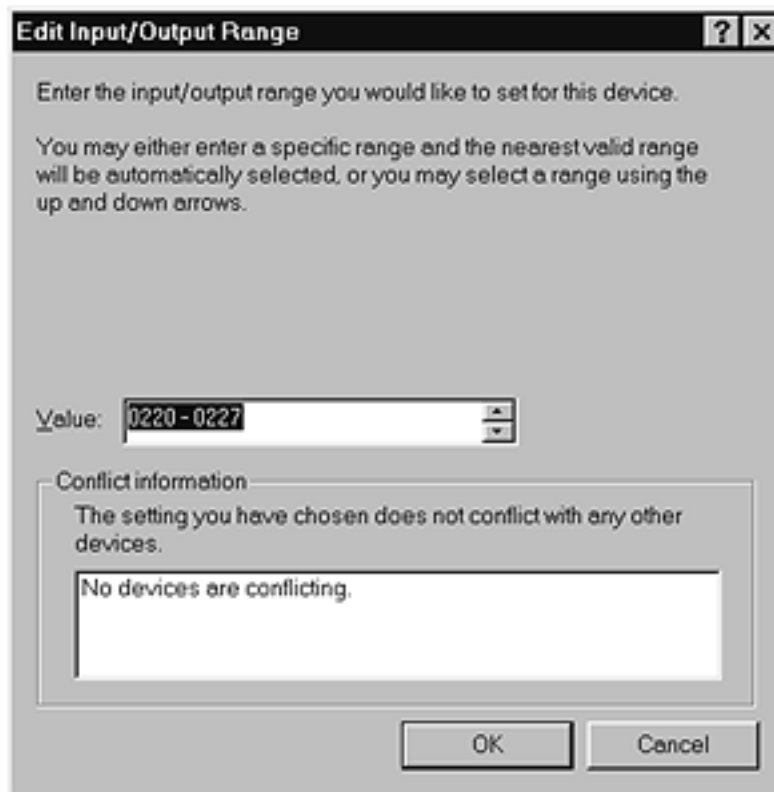
24. This will generate an "Edit Input/Output" range dialog.

Locate the **Value** box (mid-screen) and use the scroll arrows to locate the address for your ISA100A card.

25. Locate the I/O address you noted in Step 4 before you began the installation program.



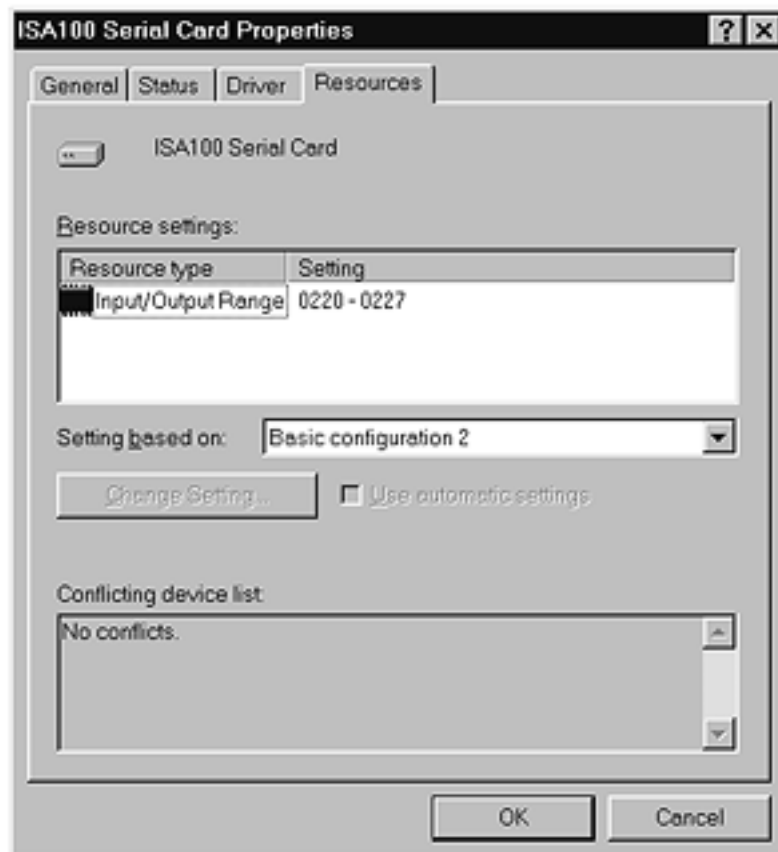
26. Review the "Conflict information" section (bottom of screen) to confirm that there is no conflict with your ISA100A address and click **OK**.



>>> IMPORTANT NOTE <<<

If your address does show a conflict, you may be using the ISA100 card for other or older BIOPAC programs or hardware. Complete this procedure and restart your computer. If the BSL *PRO* will not run, see the "Trouble Shooting" section.

27. Review the **Resource settings** box (mid-screen) to confirm that the assigned address matches the I/O address you intended to assign and click **OK**.



28. Click **Yes** to shut down your computer. (You do not have to change the settings on your ISA card.)



29. **Restart** your computer. Turn your computer power on again.

30. Run the **Biopac Student Lab *PRO* V3.xx** program.

See "Working with the BSL *PRO* Software" in your Biopac Student Lab *PRO* Manual for detailed information about starting the software and warnings.

[Return To Application Note Menu](#)