



**Set Sound Playback to BIOPAC MP45 USB Data System**



Fig. 1 - Windows XP

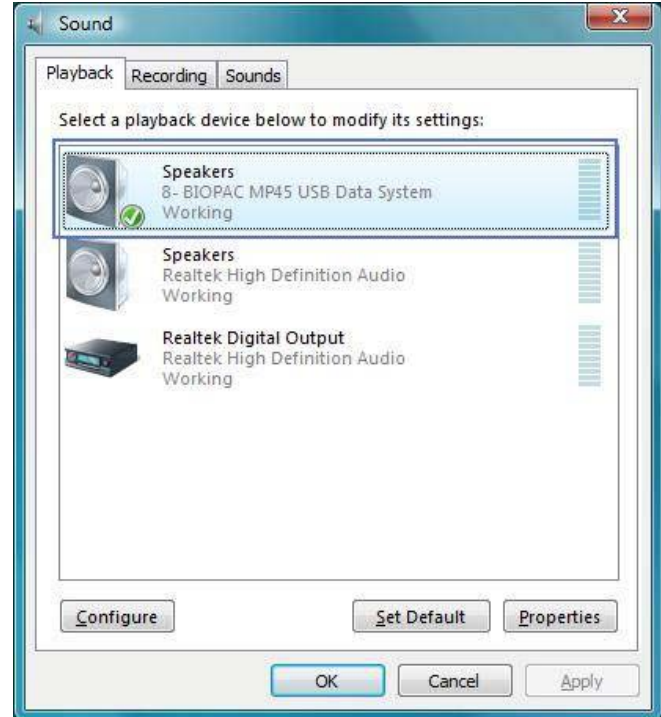


Fig. 2 - Windows VISTA

If the MP45 device is not selected as the “Default” but still has a status of “Working,” BSL 3.7.5 lessons will run normally, EXCEPT the L01 and L02 headphone output warning will appear when the “Listen” segment is attempted. This is normal behavior when the MP45 is not selected as the default device.

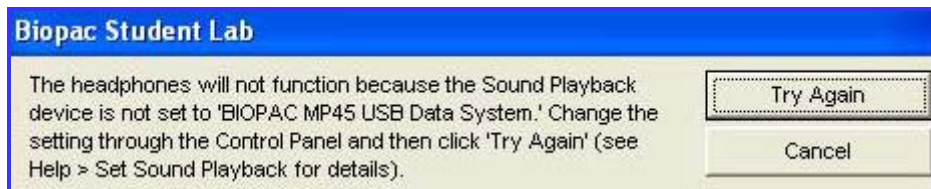
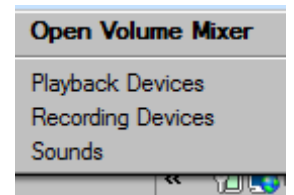


Fig. 3 - Headphones not functioning prompt (L01 and L02)

- **Windows XP** can support only one playback device at a time and may require setting the Playback device back to “BIOPAC MP45USB Data System” if another playback device was enabled after the Biopac Student Lab program was installed.
  - Set via Start > Settings > Control Panel > Sound and Audio Devices > Audio (tab)
  - Or, right-click the speaker icon if it’s in the toolbar and select Adjust Audio Properties
- **Windows Vista** can support more than one playback device at a time, but if you disable the device for playback it is also disabled for recording. You may need to right-click and select “Show disabled devices” to change the setting.
  - Set via Start > Control Panel > Sound > Playback (tab)
  - Or, right-click the speaker icon if it’s in your toolbar and select Playback devices



Potential device setting issues for BSL 3.7.5 and MP45

**! Caution** Avoid setting other audio devices as the Default and avoid disabling the BIOPAC MP45 USB drivers.

Default setting

Default playback device not set to BIOPAC MP45 USB Data System (Fig 6). Even though the MP45 is no longer assigned as the “Default”, there is no problem running most BSL 3.7.5 lessons with the MP45 device. (Note the status for both Speaker devices is “Working” but the green checked “Default” device is not BIOPAC.



Fig. 4 - XP

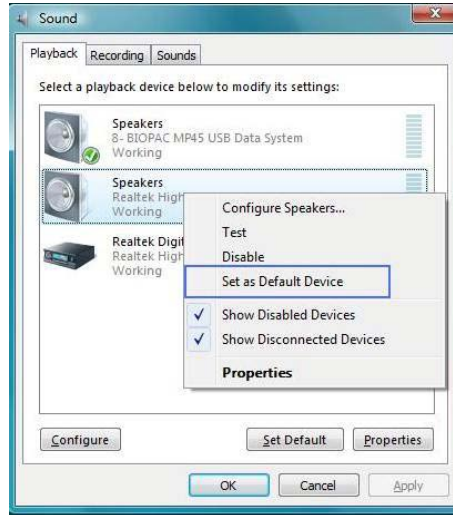


Fig. 5 – Vista with BIOPAC default

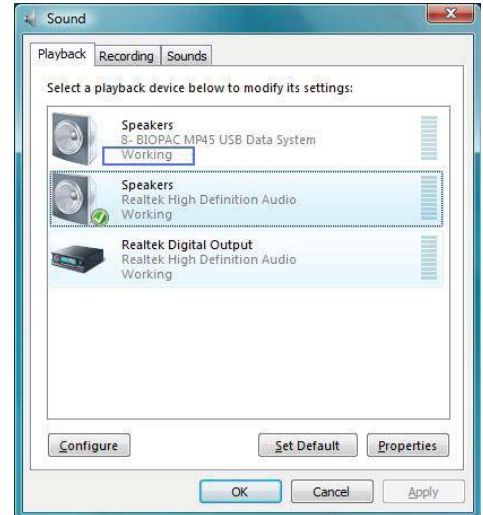


Fig. 6 – Vista with other default

Disabled device

A problem occurs if the MP45 Data System is “Disabled”, which essentially “turns off” the driver.

- In XP, you must go to the hardware tab, select the USB audio device (MP45) and click ‘Properties’ (see Fig. 7).
- In Vista, the “Disable/Enable” dialog can be accessed via right-click or “Properties” (see Fig. 8).



Fig. 7 - XP

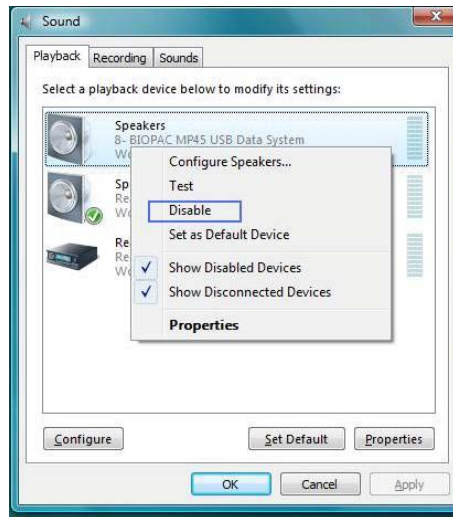


Fig. 8 – Vista

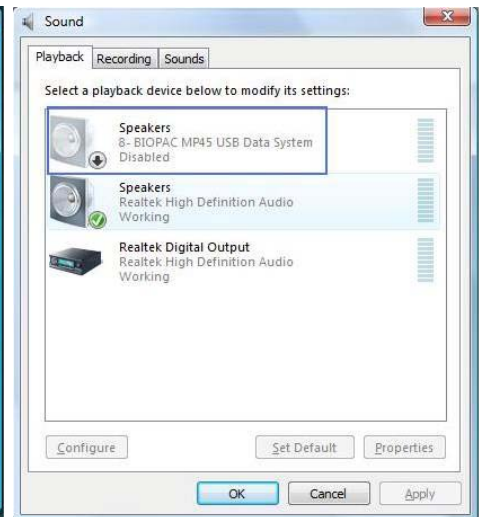


Fig. 9 - Vista

When the audio device driver is “Disabled” (see Fig. 9), it will cease to function entirely, as opposed to a being a “Working” device not assigned as the “Default.” Note the “Disabled” status of the device. This is an interim level in Vista where the audio driver can be disabled without using the Device Manager. IF the MP45 device becomes disabled, right-click its icon in the Sound Properties dialog to generate a contextual menu containing an option to “Enable”, after which the MP45 should be set as the “Default” device. (Clicking on “Properties” will also generate the “Enable” option.)

In Vista, the device can be disabled in the Sound Properties, but will still appear as enabled in the Speaker Properties and Device Manager. (Below Fig 10)

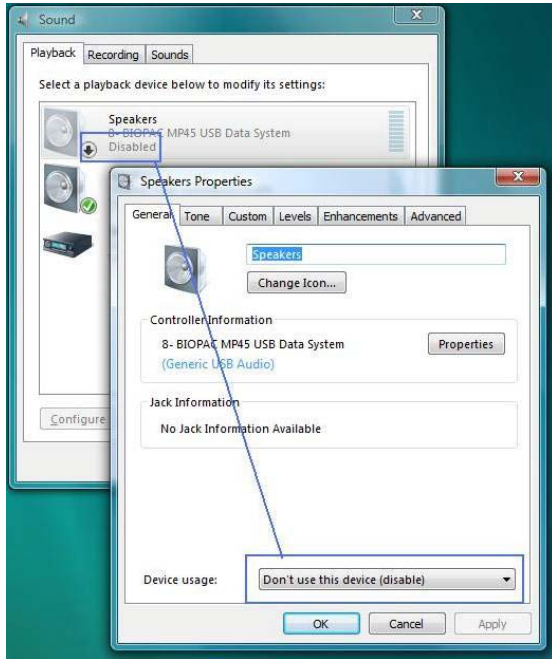


Fig 10. Vista

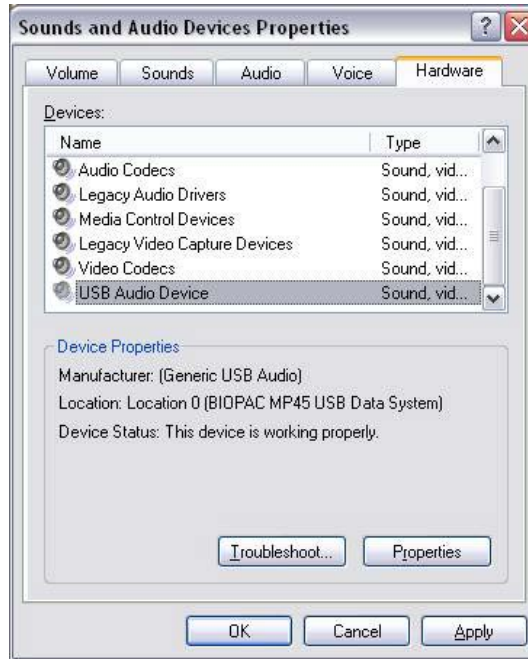


Fig. 11 – Hardware status

For additional support, please contact BIOPAC:

**BIOPAC**

[Support@biopac.com](mailto:Support@biopac.com)

Tel: (805) 685-0066

Fax: (805) 685-0067