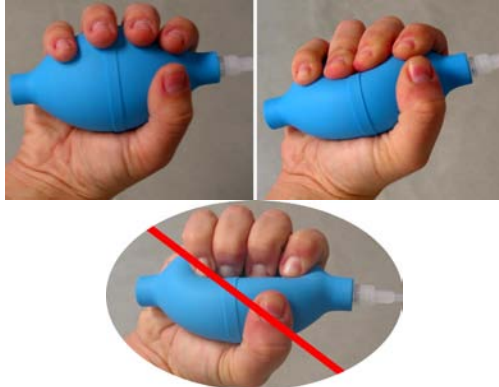


SS56L HAND CLENCH FORCE BULB



SS56L measures proportionality of bulb pressure to clench force in “kgf/m²” units (a pressure unit). This measure is accurate for the relative measures recorded in BSL Lesson 2 Electromyography (EMG) II. SS56L is recognized by current release BSL Lessons.

Specifications

Pressure Range:	BSL: 0 to 10,546 Kg-f/m ² <i>AcqKnowledge:</i> 0 to 1.0546 Kg-f/cm ²	0 to 15 psi
Accuracy:	±3%	
Output:	BSL: 0.58 mV/100 Kg-f/m ² <i>AcqKnowledge:</i> 0.58 mV/0.01 Kg-f/cm ²	4.1 mV/psi
Bulb Diameter:	5.8 cm	
Bulb Length:	11.1 cm	
Tubing Length:	3 meters	
Weight:	108 g	

Optional BSL *PRO* Presets:

- Clench Force - kpa (SS56L) - input value 20.48 mV scales to 34.47 kpa
- Clench Force - psi (SS56L) - input value 61.44 mV scales to 15 psi