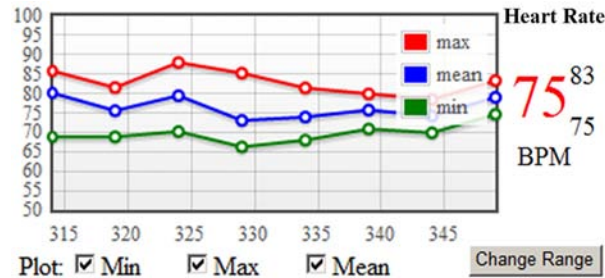


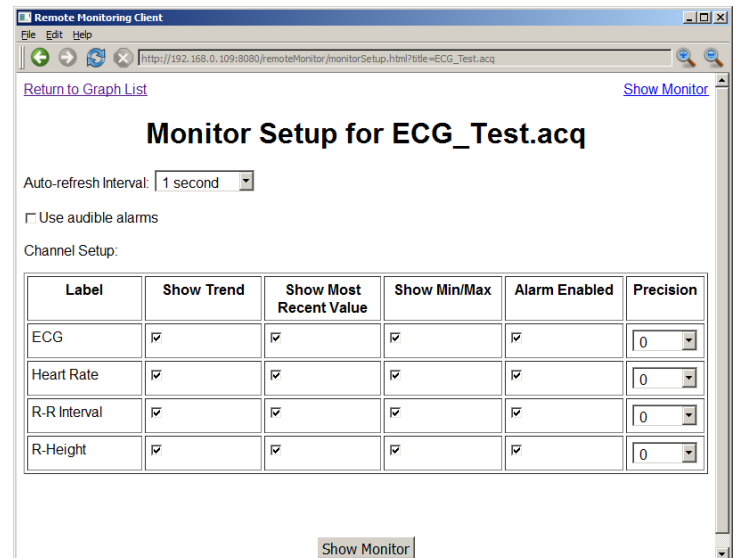
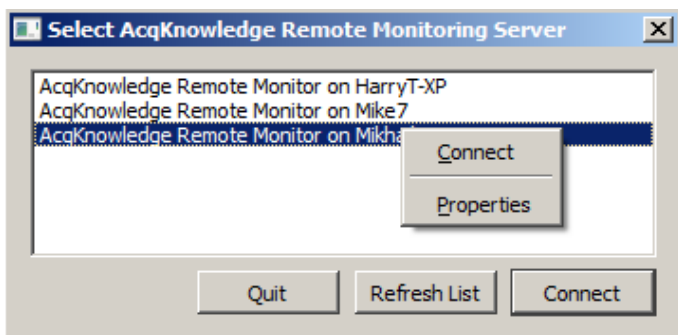


Remote Monitoring — ‘bedside monitor’ display



Use the new BIOPAC Remote Monitor feature for a simplified view of subject data across an IP network on another computer or a mobile device. The monitor displays trend data and current data values. Track the welfare of the subject with alarms to warn when signals fall out of range. It’s a convenient way to view the data on other computers in other locations. Remote Monitoring provides a simple browser interface, from which acquisitions can be started, stopped and remote data viewed during and post-acquisition.

The Remote Monitoring web interface consists of three primary pages: a list of open graph windows; configuration settings for an individual graph, and the data monitoring page.



AcqKnowledge MP devices are generally tethered to specific computers where data acquisition is performed. In some laboratories, this computer may not be in the same location as the researcher performing the experiment. In MRI situations, for example, the data acquisition computer may be in the MRI control room but the researcher may be in a separate area.

AcqKnowledge Remote Monitoring offers researchers the capability of checking on critical parameters from an alternate location.

About Remote Monitoring...

- Remote Monitoring is for viewing of data only. Transformation and specialized analysis of graph data is not supported within the Remote Monitoring interface.
- Remote Monitoring is a client/server application capable of locating and connecting to computers running AcqKnowledge on the same network. The system will work on any device that has access to the same IP based network as the MP150.
- Remote Monitoring is licensed functionality and must be activated by BIOPAC.

Remote Monitoring functionality is available through an optional license available with AcqKnowledge 4.2 or above. The license must be authorized to access Remote Monitoring functionality. To add a license to an existing MP System, please contact BIOPAC.

