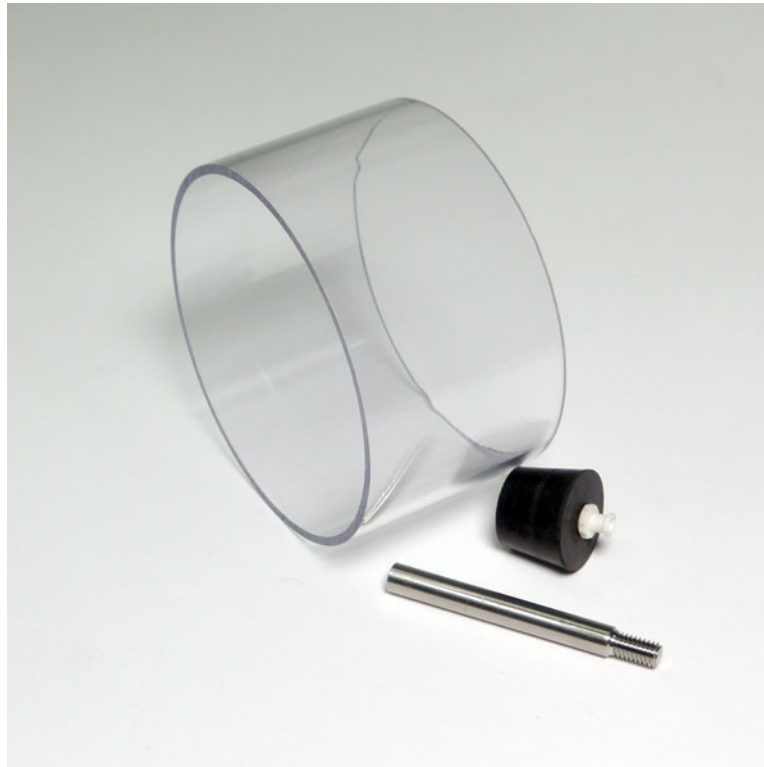


RX-GAS3 CALIBRATION CHAMBER FOR GASSYS3



This is a short chamber that is used when performing calibration of the GASSYS3 Gas Analysis module. The large chamber and rod are replaced with a shorter chamber and rod. Using the included stopper on the inlet of the GASSYS3, calibration gases may then be injected into the calibration chamber using the AFT17 + GASREG + GASCAL/GASCAL2. After calibration, the larger chamber is used.

The stopper includes a standard female Luer lock connector to interface to other equipment as well.



RX-GAS3 connected to MP36