

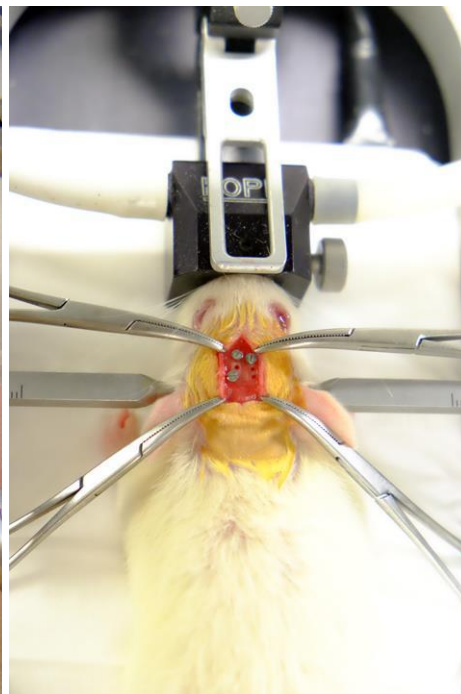
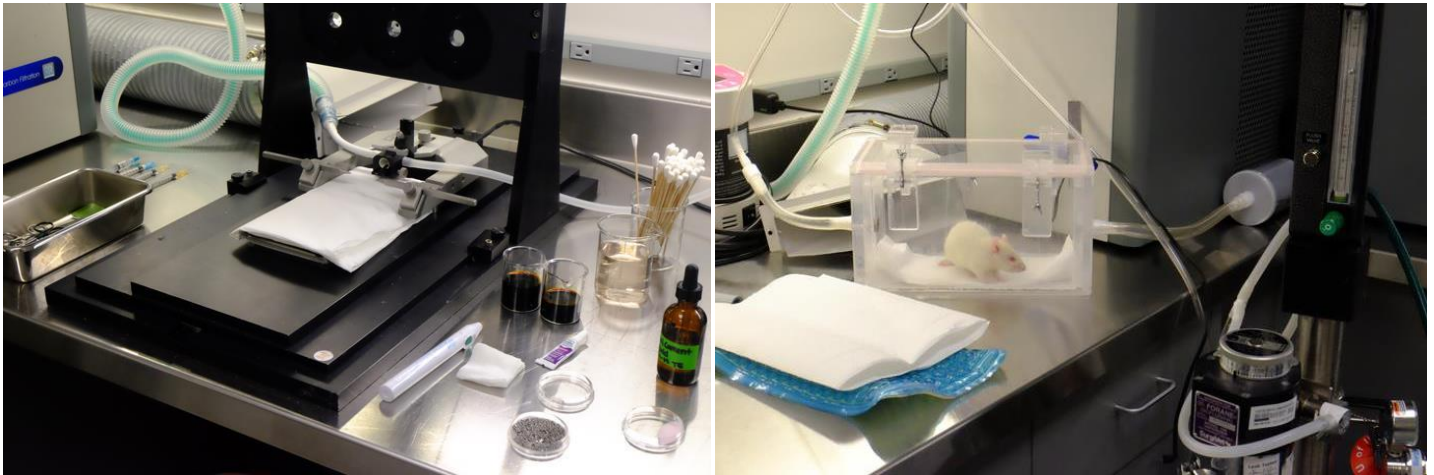
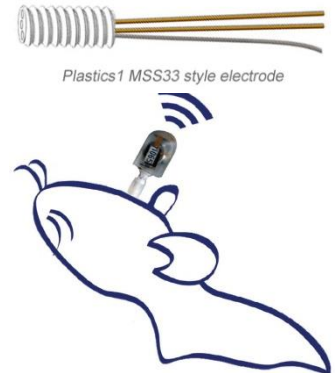
Wired Electrode Implantation for Adult Rats

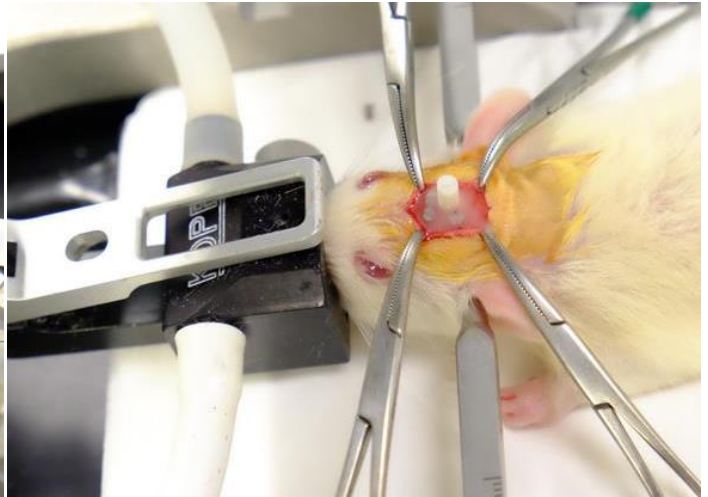
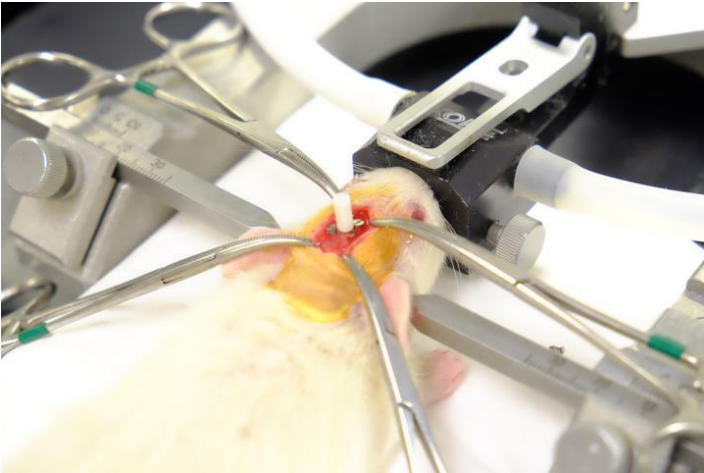
Surgical guide to implant Plastics One electrode system for Epoch reusable sensor

Overview

Each [EPOCH-REUSE-SEN](#) reusable sensor includes one 3-electrode mount; additional mounts can be ordered directly from [Plastics One \(Invivo1\)](#) as part #**MS333/3-A/SPC** ELECT SS .005" 3C UNTW mount.

Bone screws are needed to anchor the Plastics One electrode system. The wires get clipped short and implanted, then dental acrylic is placed around the lower portion of the white plastic and bone screws to anchor the system in place. The Epoch reusable sensor is attached to the Plastics One electrode system implanted on the skull (the clearish collar screws on to the implanted Plastics One electrode system). Surgical details are shipped with each system and can be previewed here. Video and detailed guide available on request.





BIOPAC Part #: EPOCH-REUSE-SEN



powered by **epitel**