



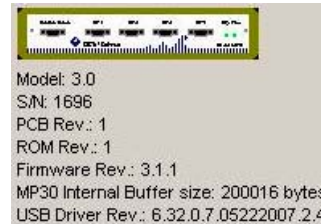
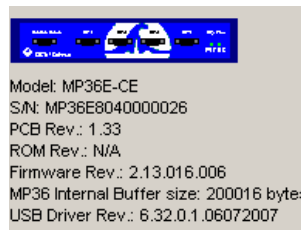
BSL Driver Guide

Administrator Privileges Required

42 Aero Camino, Goleta, CA 93117
Tel (805) 685-0066 | Fax (805) 685-0067
info@biopac.com | www.biopac.com

Select a driver installation category

- A** First-time driver installation for MP3X — page 2
- B** Update MP36/MP35 driver — page 5
- C** Update MP30 driver — page 7



Troubleshooting — see page 9.

Help menu > About dialogs display version info

After installing the driver, use the About dialog to confirm that the **Firmware** and **USB Driver Rev.** are current:

1. Launch the BSL *PRO* software.
2. Click the Help menu and select *About Biopac Student Lab*.

Check for an update and confirm current version numbers at WWW.BIOPAC.COM > [Support](#) > [Downloads](#).

MP3X Model	Windows OS	
	XP or Vista 32-bit	Vista 64-bit
MP36	Driver: 6.32.0.1.06072007 Firmware: 2.13.016.006	6.64.0.1.06072007 2.13.016.006
MP35A	Driver: 6.32.0.7.03152007 Firmware: 1.28.012.030	6.64.0.7.03152007 1.28.012.030
MP35	Driver: 6.32.0.7.03152007 Firmware: 1.26.042.030	6.64.0.7.03152007 1.26.042.030
MP30	Driver: 6.32.0.7.05222007.2.4 Firmware: 3.1.1	6.64.0.7.05222007.2.4 3.1.1

Current firmware and driver versions as of June 2008

IMPORTANT!

Attention Windows Vista Users!

Vista uses a default setting that checks for drivers automatically, which may not be optimum for all users based on the system specifications (MP unit, software version, etc.). Under the default setting, the option to install the driver manually from a user-defined location is not presented unless the network connection is disabled or the network cable unplugged so if there is an open internet connection, the latest “signed” driver will automatically be downloaded and installed from Microsoft.

→ The default should be changed to ensure correct driver installation for the system as specified by BIOPAC, *not* Microsoft.

Driver installation options are located in Vista. Instead of being presented by default in the "Found New Hardware" screen (as in XP), they're buried in the System Properties.

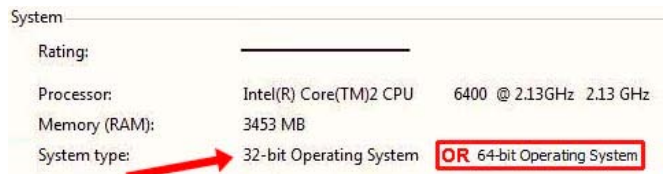
1. Select Windows Start > Control Panel > System.
2. Select "Advanced System Settings" from the "Tasks" pane at the left of the System screen.
3. Click the "Hardware" tab and select "Windows Update Driver Settings."



4. Select the “Ask me...” option and click OK.



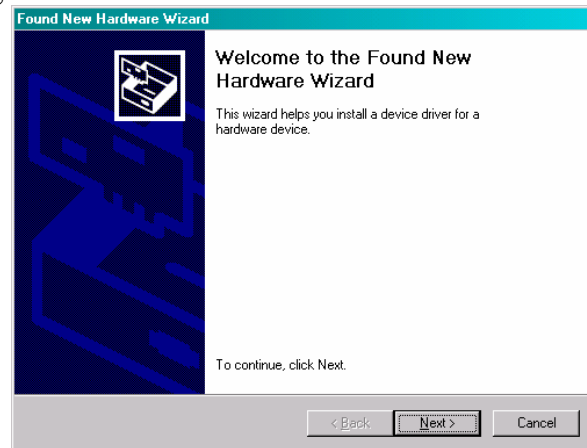
To check the operating system bit level, generate the [Control Panel > System Info](#) dialog (sample shown at right) with the keyboard combo



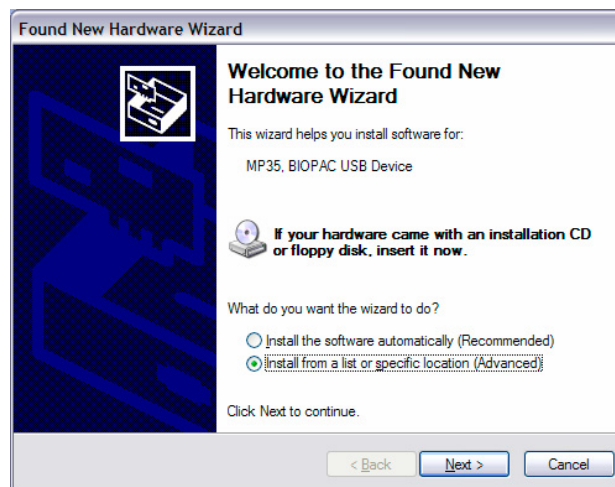
Note: Screen images may vary slightly based on each Windows® operating system but content should be similar.

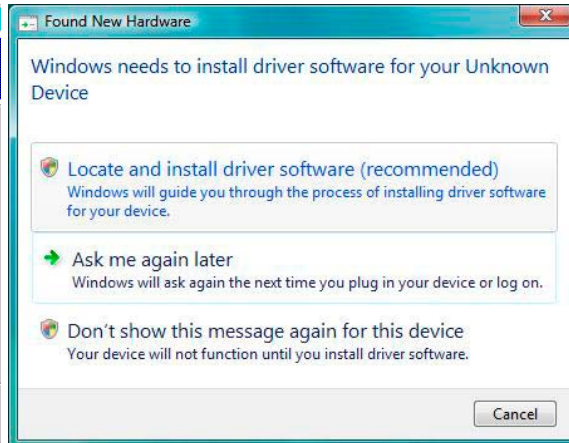
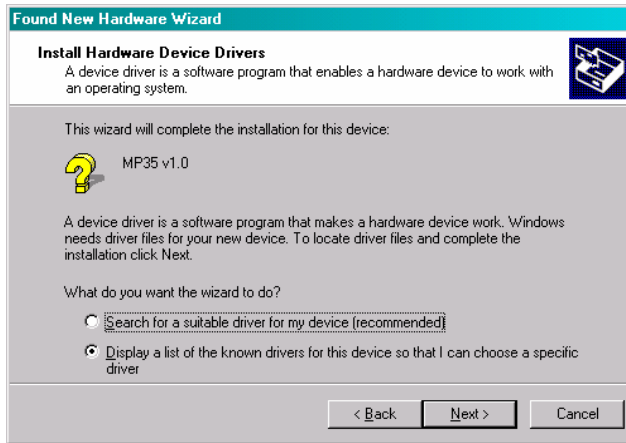
A First time installation: MP3X Driver

1. Power on the MP3X data acquisition unit.
2. Connect the MP3X to a USB port.
3. Wait for the “Found New Hardware Wizard” to be generated.



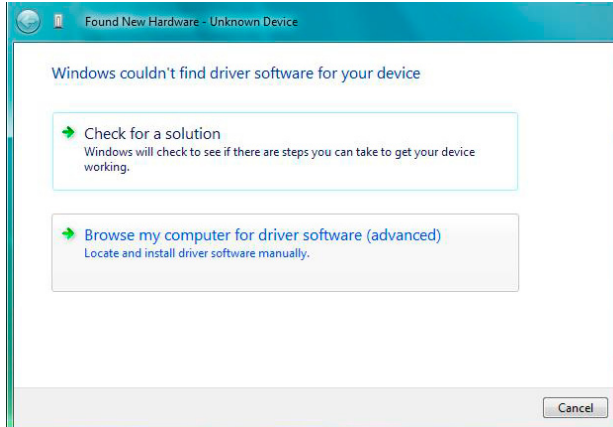
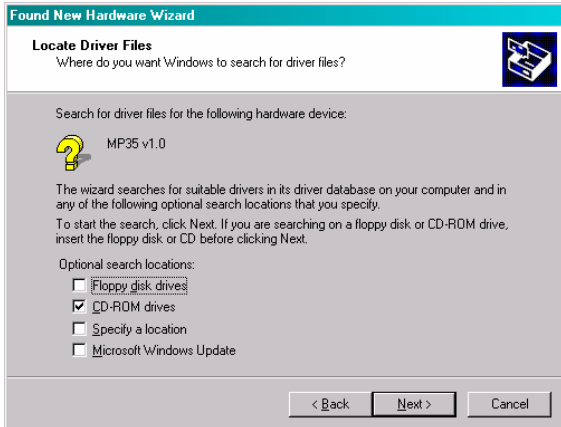
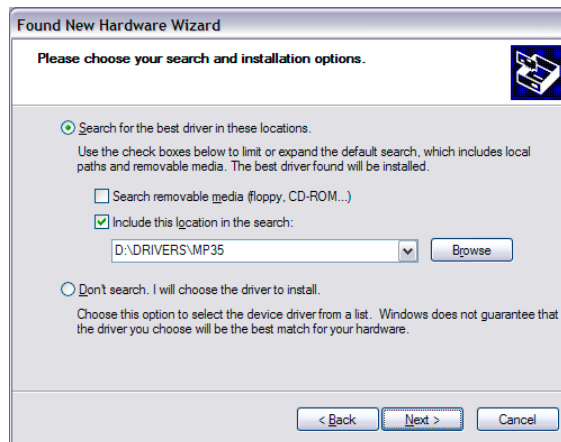
4. Select “No, not this time” if prompted (under Windows XP) and click “Next.”
5. Select the option that allows you to locate and then install and click “Next.”
 - The exact wording for this option varies based on the OS but it should be similar to “Install from a list...” or “Display a list...” or “Locate and Install.”





6. Select the option that allows you to browse or specify a location.

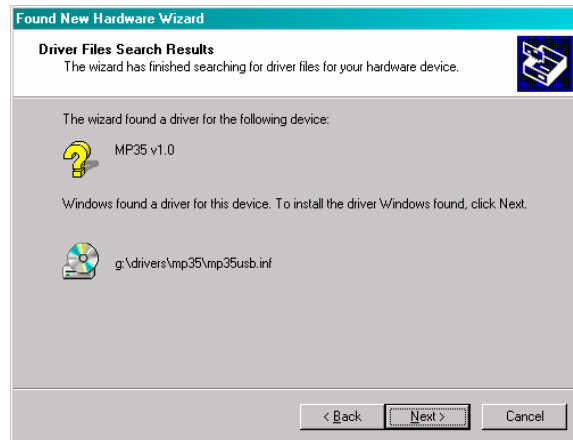
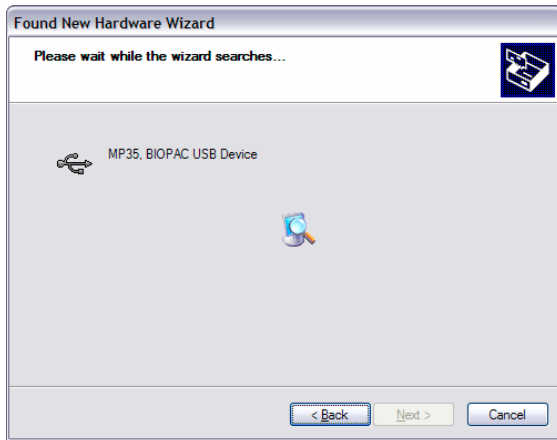
- The exact wording for this option varies based on the OS but it should be similar to “Search for...” or browse to or specify a CD-ROM drive.



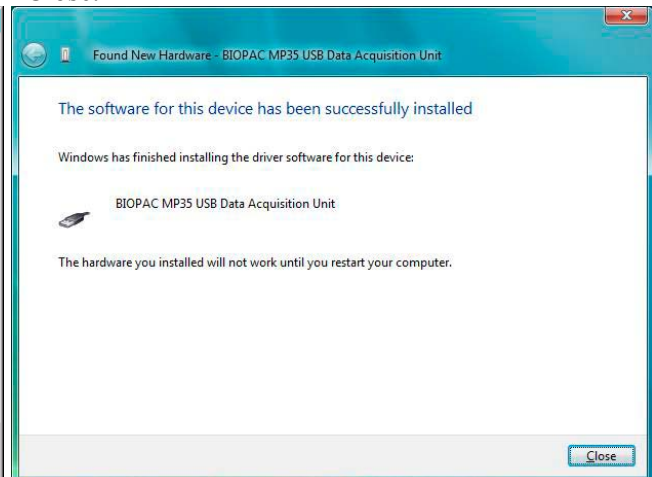
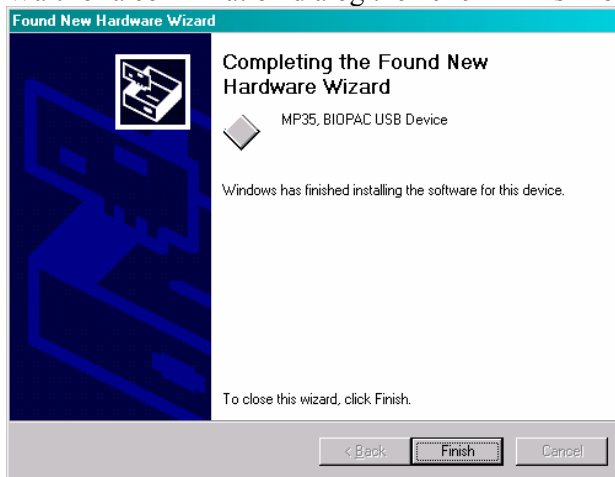
7. Locate the Driver. Default locations are:

- BSL 3.7.2 and above: **Program Files\Biopac Student Lab\DRIVERS\MP36, MP35 or MP30(USB1W)**
- If your computer has a Windows® Vista 64-bit processor, you must select the 64-bit driver in the folder **Program Files\Biopac Student Lab\DRIVERS\64-bit Driver\...**
- BSL 3.7.1 and below: **Program Files\Biopac Student Lab\BSL 3.7\DRIVERS\MP35 or MP30(USB1W)**

8. Click “Next.”



9. Wait for a confirmation dialog then click “Finish” or “Close.”



10. Launch the BSL *PRO* software.

11. Check for the green status indicator in the software window next to the “Start” button.



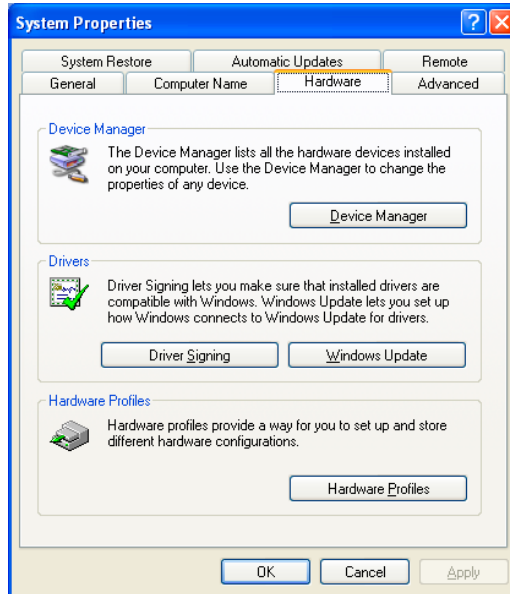
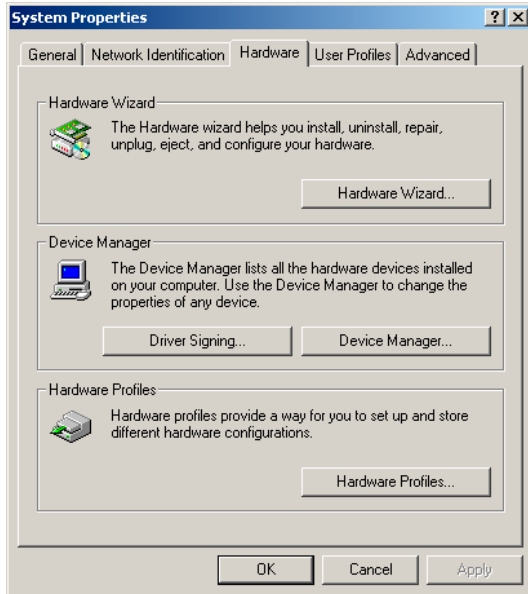
12. Select **Help > About Biopac Student Lab** and confirm the current driver is installed (see page 2 for details).

- If communication is not established or the driver is not current, see Trouble Shooting (page 9).

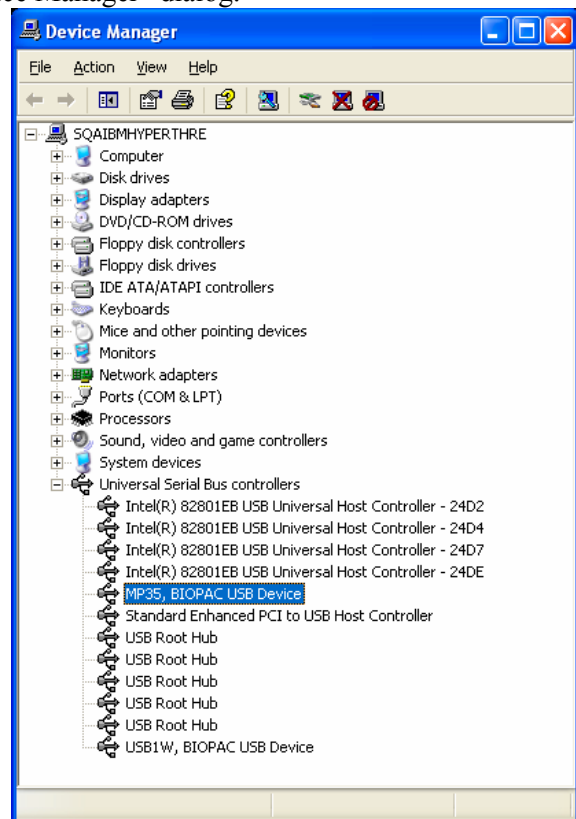
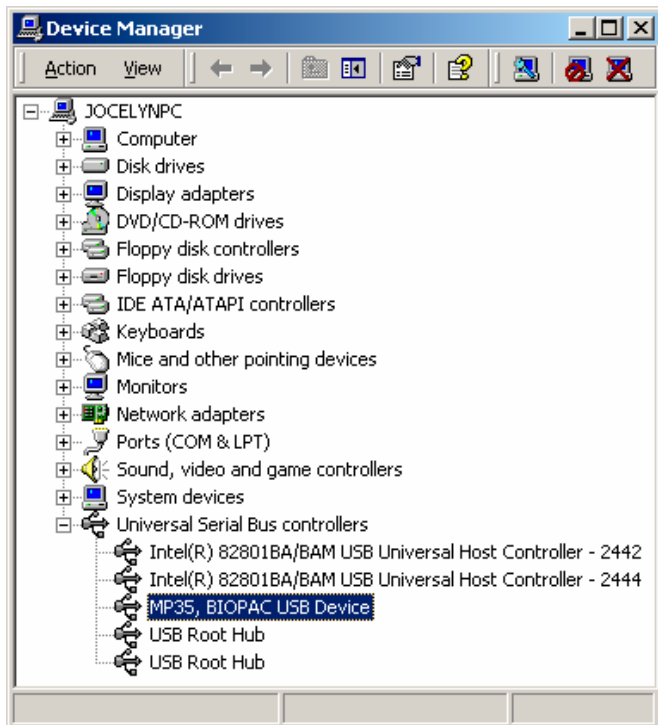
B Update to a newer MP36 or MP35 Driver

Note: Screen images may vary slightly based on each Windows® operating system but content should be similar.

1. Make sure that the MP36/MP35 is powered and connected to the computer.
2. Right-click the “My Computer” icon on the desktop and select “Properties” to generate the System Properties dialog.
3. Click the “Hardware” tab.



4. Click the “Device Manager” button to generate the “Device Manager” dialog.



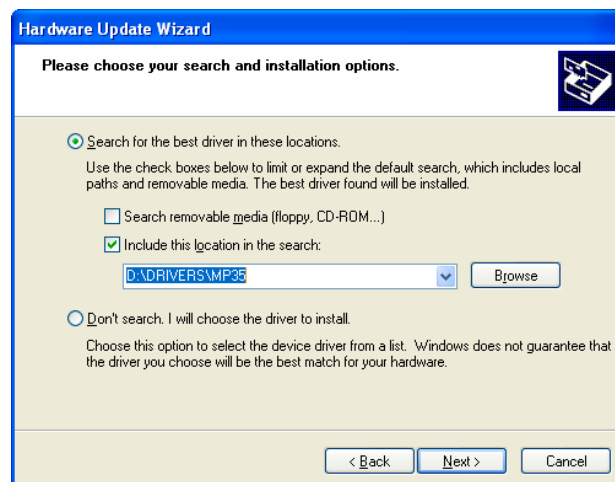
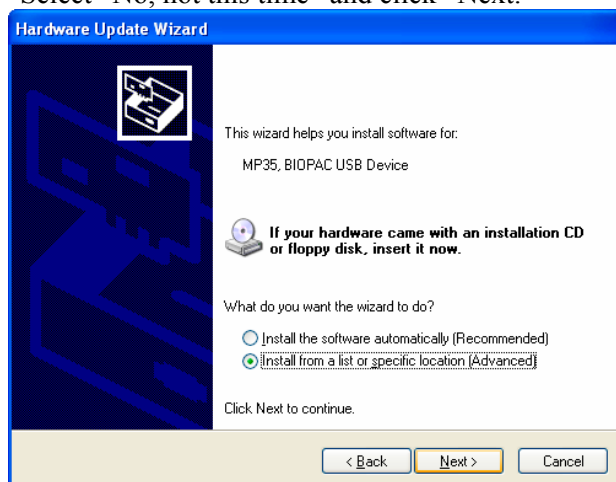
5. Expand the “Universal Serial Bus controllers” listing and select “MP36, BIOPAC USB Device” or “MP35, BIOPAC USB Device.”
6. Select “Update Driver.”

- Windows XP: Select the “Action” menu and then select “Update Driver...”

7. Wait for the “Update Wizard” to be generated.



8. Select “No, not this time” and click “Next.”



9. Select “Install from a list or specific location (Advanced)” and click “Next.”

10. Select “Search for the best driver in these locations.”

11. Uncheck “Search removable media (floppy, CD-ROM...)”

12. Check “Include this location in the search:”

13. Click “Browse.”

14. Locate the Driver; it should be [BSL INSTALLATION CD]\DRIVERS\MP3X.

15. Click “OK.”

16. Click “Next.”

17. Wait for installation to complete.

18. Launch the BSL *PRO* software.

19. Check for the green status indicator in the software window next to the “Start” button.



20. Select **Help > About Biopac Student Lab** and confirm the current driver is installed (see page 2 for details).

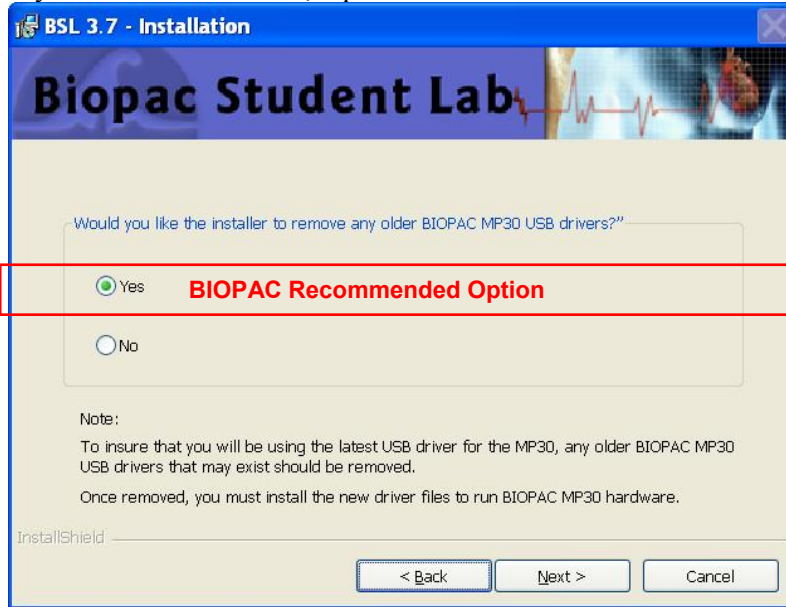
- If communication is not established or the driver is not current, see *Trouble Shooting* (page 9).

C Update to a newer MP30 Driver

1. Allow the Biopac Student Lab installer to remove any older MP30 USB driver files.

Note: Screen images may vary slightly based on each Windows® operating system but content should be similar.

- During software installation, you need to select **YES** when prompted to remove drivers. If you did not select YES, repeat BSL software installation and choose YES at this prompt.

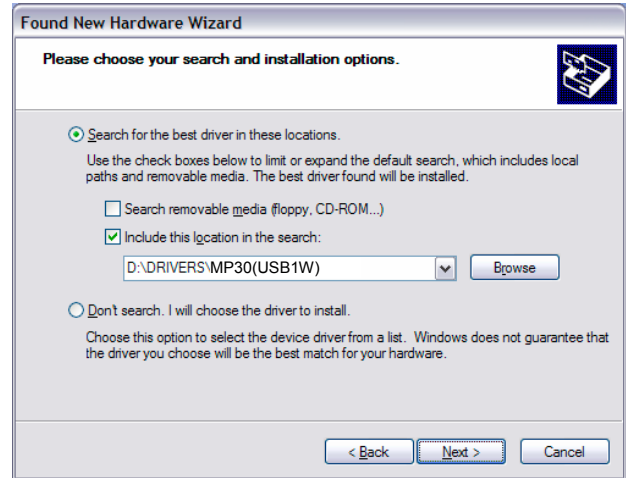


If you select “No” at this prompt during installation, you will need to manually remove the drivers before BSL 3.7 will run. See Troubleshooting (page 9).

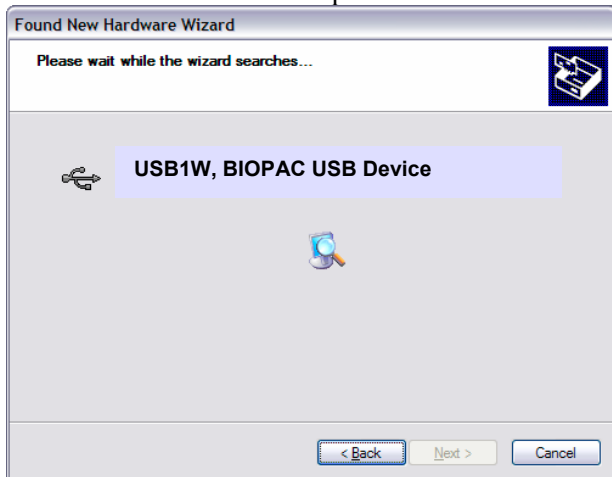
2. Connect the MP30 to the USB1W.
3. Power on the MP30.
4. Connect the USB1W to the USB port.
5. Wait for the “Found New Hardware Wizard.”



6. Select “No, not this time” and click “Next.”



7. Select “Install from a list or specific location (Advanced)” and click “Next.”
8. Select “Search for the best driver in these locations.”
9. Uncheck “Search removable media (floppy, CD-ROM...).”
10. Check “Include this location in the search:”
11. Click “Browse.”
12. Locate the Driver folder, which should be **[BSL INSTALLATION CD]\DRIVERS\MP30(USB1W)**.
13. Click “OK.”
14. Click “Next.”
15. Wait for Installation to complete.



16. Launch the BSL *PRO* software.
17. Check for the green status indicator in the software window next to the “Start” button.



18. Select **Help > About Biopac Student Lab** and confirm the current driver is installed (see page 2 for details).
- If communication is not established or the driver is not current, see *Trouble Shooting* (page 9).

Trouble Shooting

If, **after following the procedures for updating drivers**, you are unable to establish communication with the MP3X and the computer or the driver files have not updated correctly to the current version:

1. Check power and cable connections.
2. Turn off the MP3X.
3. Turn off the computer (do not use Restart).
4. Turn on the computer.
5. Turn on the MP3X (only after you have turned on the computer).
6. Wait (2-15 seconds) for the “Busy” light on the MP3X to go out.
7. Launch the BSL *PRO* software.
8. Check for green status indicator in the software window.
9. If communication is not established, manually uninstall the driver as described below.



- **Only manually uninstall drivers if all other troubleshooting options failed.**



Windows XP:

- A. Turn the MP3X unit off.
- B. Disconnect the USB cable from the computer’s USB port (leave connected to the MP3X unit).
- C. Launch the uninstaller.
 - MP36 users: “**MP36USB_UNINSTALLER.exe**”
 - MP35 users: “**MP35USB_UNINSTALLER.exe**”
 - MP30 users: “**USB1W_UNINSTALLER.exe**”
- D. Click “Uninstall Driver” and follow the prompts in the program.
- E. To install the current MP3X Driver, follow **First time installation** (page 2).

The uninstaller is on the BIOPAC Installation CD or WWW.BIOPAC.COM > Support > Downloads

Windows Vista:

BIOPAC MP36/MP35 and USB1W uninstaller utilities are not supported under Windows Vista so the driver must be manually uninstalled via the Device Manager.

- A. Open the **Device Manager**:
 - Select Windows Start > Control Panel > Device Manager *or*
 - Use the keyboard combo  +  and then click the Hardware tab > Device Manager
- B. Select the BIOPAC device.
 - The MP unit must be ON for the device to be displayed in the list of Universal Serial Bus controllers.
- C. Choose Action > **Uninstall** (or right-click select Uninstall).
- D. Click “**Browse my computer...**”
- E. Browse to the drive with the BIOPAC CD or the location of a driver downloaded from WWW.BIOPAC.COM > Support > Downloads.
- F. Select the compatible driver option and click **Next**.

