

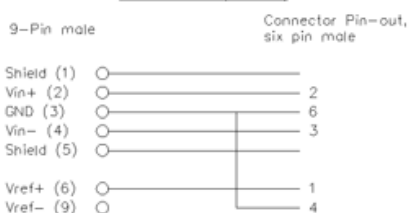
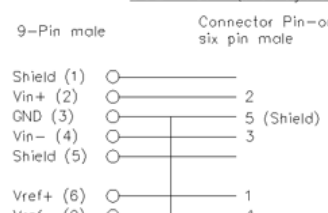

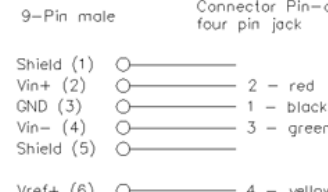
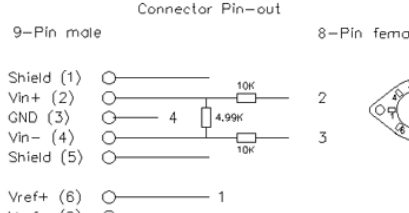
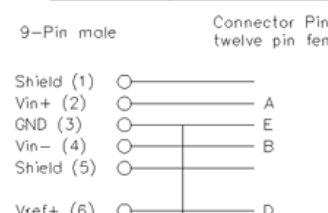
TRANSDUCER CONNECTOR INTERFACES (TCI)

- BSL-TCI0 Interface Grass
- BSL-TCI1 Interface Beckman 5 pin
- BSL-TCI2 Interface WPI
- BSL-TCI3 Interface Lafayette
- BSL-TCI4 Interface Honeywell
- BSL-TCI5 Interface Mod Phone
- BSL-TCI6 Interface Beckman
- BSL-TCI7 Interface Nihon Kodon
- BSL-TCI8 Interface Narco 7
- BSL-TCI9 Interface Fukuda
- BSL-TCI10 Interface Gould: *discontinued*
- BSL-TCI11 Interface Hugo Sachs
- BSL-TCI12 Interface Thornton

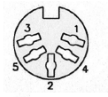
- BSL-TCI13 Interface MP30 to Piezo
- BSL-TCI14 Interface 1/4 phono
- BSL-TCI15 Interface 5-pin DIN Vernier
- BSL-TCI16 Interface BT connector, Vernier
- BSL-TCI17 Interface 5-pin Intellitool
- BSL-TCI18 Interface 2 mm Hg Strain
- BSL-TCI19 Interface 6-pin Intellitool
- BSL-TCI20 Interface 3.5 mm Intellitool
- BSL-TCI21 Interface BNC pH probe
- BSL-TCI22 Interface SS2L to SS39L

**See also:** SS-KIT-IN BSL/SS Custom Input Kit  
 SS-KIT-OUT BSL/SS Custom Output Kit

BSL-TCI PIN-OUTS

<p><b>BSL-TCI0</b></p> <p><u>BSL-TCI0 (Grass)</u></p> <p>9-Pin male Connector Pin-out, six pin male</p>  <p>Shield (1) ○      Vin+ (2) ○      GND (3) ○      Vin- (4) ○      Shield (5) ○      Vref+ (6) ○      Vref- (9) ○</p>	<p><b>BSL-TCI4</b></p> <p><u>BSL-TCI4 (Honeywell)</u></p> <p>9-Pin male Connector Pin-out, six pin male</p>  <p>Shield (1) ○      Vin+ (2) ○      GND (3) ○      Vin- (4) ○      Shield (5) ○      Vref+ (6) ○      Vref- (9) ○</p>
<p><b>BSL-TCI1</b></p> <p><u>BSL-TCI1 (Beckman 5-pin)</u></p> <p>9-Pin male Connector Pin-out, five pin female</p>  <p>Shield (1) ○      Vin+ (2) ○      GND (3) ○      Vin- (4) ○      Shield (5) ○      Vref+ (6) ○      Vref- (9) ○</p>	<p><b>BSL-TCI5</b></p> <p><u>BSL-TCI5 (Modular Phone Jack)</u></p> <p>9-Pin male Connector Pin-out, four pin jack</p>  <p>Shield (1) ○      Vin+ (2) ○      GND (3) ○      Vin- (4) ○      Shield (5) ○      Vref+ (6) ○      Vref- (9) ○</p>
<p><b>BSL-TCI2</b></p> <p><u>BSL-TCI2</u></p> <p>9-Pin male Connector Pin-out, 8-Pin female DIN</p>  <p>Shield (1) ○      Vin+ (2) ○      GND (3) ○      Vin- (4) ○      Shield (5) ○      Vref+ (6) ○      Vref- (9) ○</p>	<p><b>BSL-TCI6</b></p> <p><u>BSL-TCI6 (Beckman 12-pin)</u></p> <p>9-Pin male Connector Pin-out, twelve pin female</p>  <p>Shield (1) ○      Vin+ (2) ○      GND (3) ○      Vin- (4) ○      Shield (5) ○      Vref+ (6) ○      Vref- (9) ○</p>

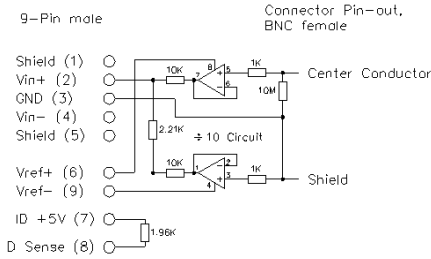
**BSL-TCI PIN-OUTS**

<p><b>BSL-TCI3</b></p> <p><u>BSL-TCI3 (Lafayette)</u></p> <p>9-Pin male      Connector Pin-out, nine pin female</p> <p>Shield (1) ○ —————</p> <p>Vin+ (2) ○ ————— H</p> <p>GND (3) ○ ————— E</p> <p>Vin- (4) ○ ————— E</p> <p>Shield (5) ○ —————</p> <p>Vref+ (6) ○ ————— K</p> <p>Vref- (9) ○ ————— C</p>	<p><b>BSL-TCI7</b></p> <p><u>BSL-TCI7 (Nihon Kodon)</u></p> <p>9-Pin male      Connector Pin-out, five pin female</p> <p>Shield (1) ○ —————</p> <p>Vin+ (2) ○ ————— 2</p> <p>GND (3) ○ ————— 1</p> <p>Vin- (4) ○ ————— 5</p> <p>Shield (5) ○ —————</p> <p>Vref+ (6) ○ ————— 3</p> <p>Vref- (9) ○ ————— 4</p>
<p><b>BSL-TCI8</b></p> <p><u>BSL-TCI8 (Narco)</u></p> <p>9-Pin male      Connector Pin-out, seven pin female</p> <p>Shield (1) ○ —————</p> <p>Vin+ (2) ○ ————— 1</p> <p>GND (3) ○ ————— 4 &amp; 3 (shield)</p> <p>Vin- (4) ○ ————— 2</p> <p>Shield (5) ○ —————</p> <p>Vref+ (6) ○ ————— 6</p> <p>Vref- (9) ○ ————— 7</p> <p>301r</p> <p>33.2k</p> <p>1.58k</p>	<p><b>BSL-TCI14</b></p> <p><u>BSL-TCI14 (Lafayette Phono)</u></p> <p>9-Pin male      Connector Pin-out, Phono female</p> <p>Shield (1) ○ —————</p> <p>Vin+ (2) ○ ————— 3</p> <p>GND (3) ○ —————</p> <p>Vin- (4) ○ ————— 2</p> <p>Shield (5) ○ —————</p> <p>Vref+ (6) ○ —————</p> <p>Vref- (9) ○ —————</p> <p>49.9</p> <p>1K</p> <p>1K</p>
<p><b>BSL-TCI9</b></p> <p><u>BSL-TCI9 (Fukuda)</u></p> <p>9-Pin male      Connector Pin-out, eight pin female</p> <p>Shield (1) ○ —————</p> <p>Vin+ (2) ○ ————— 1</p> <p>GND (3) ○ —————</p> <p>Vin- (4) ○ ————— 3</p> <p>Shield (5) ○ —————</p> <p>Vref+ (6) ○ ————— 7</p> <p>Vref- (9) ○ ————— 6</p>	<p><b>BSL-TCI15</b></p> <p><u>BSL-TCI15 (Vernier 5-Pin)</u></p> <p>9-Pin male      Connector 5-PIN DIN FEMALE</p> <p>Shield (1) ○ —————</p> <p>Vin+ (2) ○ ————— 1</p> <p>GND (3) ○ —————</p> <p>Vin- (4) ○ ————— 5</p> <p>Shield (5) ○ —————</p> <p>Vref+ (6) ○ ————— 4</p> <p>Vref- (9) ○ —————</p> <p>100K</p> <p>1K</p> 
<p><b>BSL-TCI10 Gould 12-pin: discontinued</b></p>	
<p><b>BSL-TCI11</b></p> <p><u>BSL-TCI11 (Hugo Sachs-Harvard)</u></p> <p>9-Pin male      Connector Pin-out, six pin female</p> <p>Shield (1) ○ —————</p> <p>Vin+ (2) ○ ————— 4</p> <p>GND (3) ○ ————— 6</p> <p>Vin- (4) ○ ————— 2</p> <p>Shield (5) ○ —————</p> <p>Vref+ (6) ○ ————— 1</p> <p>Vref- (9) ○ ————— 5</p>	<p><b>BSL-TCI16</b></p> <p><u>BSL-TCI16 (Vernier Dissolved O2)</u></p> <p>9-Pin male      Connector Pin-out, BT female</p> <p>Shield (1) ○ —————</p> <p>Vin+ (2) ○ ————— 10K BLUE</p> <p>GND (3) ○ ————— 102 BLACK</p> <p>Vin- (4) ○ —————</p> <p>Vref+ (6) ○ ————— YELLOW</p> <p>ID +5V (7) ○ ————— GREEN</p> <p>ID SENSE (8) ○ ————— RED</p>
<p><b>BSL-TCI12</b></p> <p><u>BSL-TCI12 (Thornton)</u></p> <p>9-Pin male      Connector Pin-out, six pin female</p> <p>Shield (1) ○ —————</p> <p>Vin+ (2) ○ ————— 1</p> <p>GND (3) ○ ————— 3</p> <p>Vin- (4) ○ ————— 4</p> <p>Shield (5) ○ —————</p> <p>Vref+ (6) ○ —————</p> <p>Vref- (9) ○ —————</p> <p>1K</p> <p>1K</p>	<p><b>BSL-TCI17</b></p> <p><u>BSL-TCI17 (Intellitool Physiogrip)</u></p> <p>9-Pin male      Connector Pin-out, 5-Pin male</p> <p>Shield (1) ○ —————</p> <p>Vin+ (2) ○ —————</p> <p>GND (3) ○ —————</p> <p>Vin- (4) ○ —————</p> <p>Shield (5) ○ —————</p> <p>Vref+ (6) ○ —————</p> <p>Vref- (9) ○ —————</p> <p>249K</p> <p>10K</p> <p>249K</p> <p>249K</p>

**BSL-TCI PIN-OUTS**

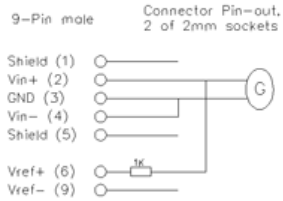
**BSL-TCI13**

BSL-TCI13 (MP3X to Piezo)



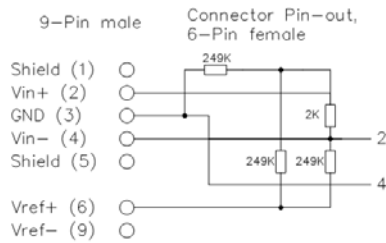
**BSL-TCI18**

BSL-TCI18 (Liquid Metal Strain Gauge)



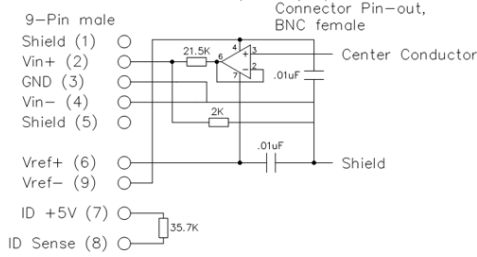
**BSL-TCI19**

BSL-TCI19 (Intellitool R. Hammer, DIN)



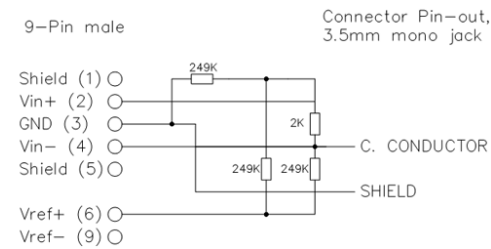
**BSL-TCI21**

BSL-TCI21 (BNC pH)



**BSL-TCI20**

BSL-TCI20 (Intellitool R. Hammer, phono)



**BSL-TCI22**

