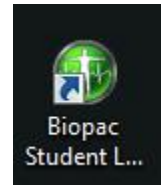


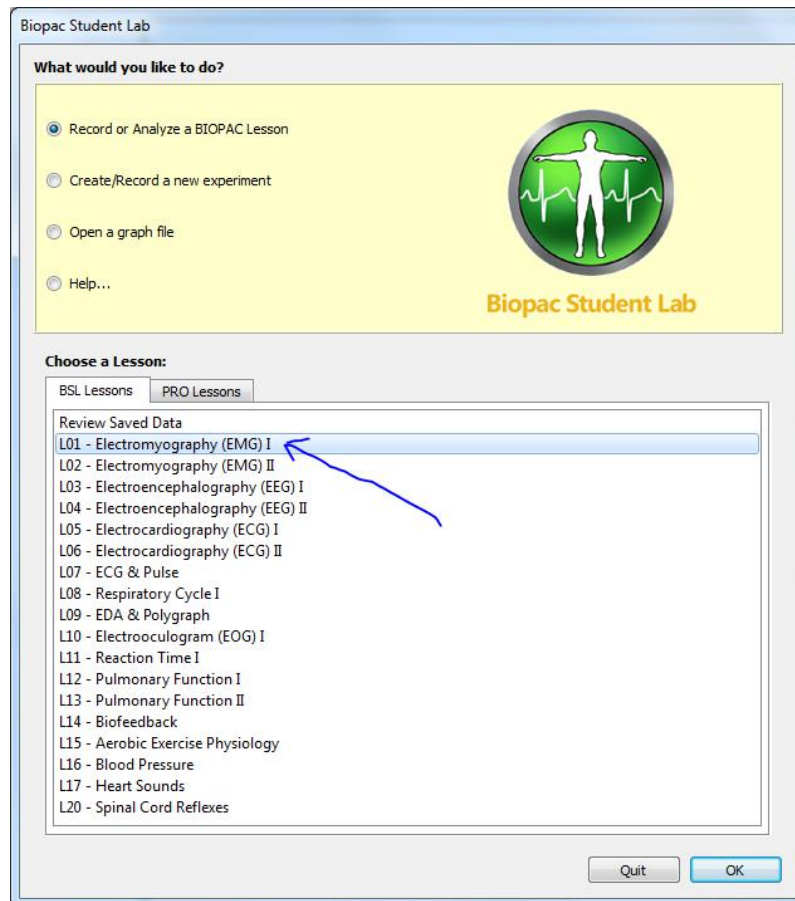
First make sure that you are logged in through an account with administrator privileges. You must be able to install software on the computer.

Here are steps that should work:

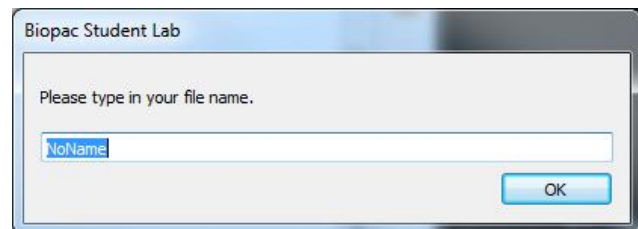
1) Launch Biopac Student Labs by clicking on its shortcut:



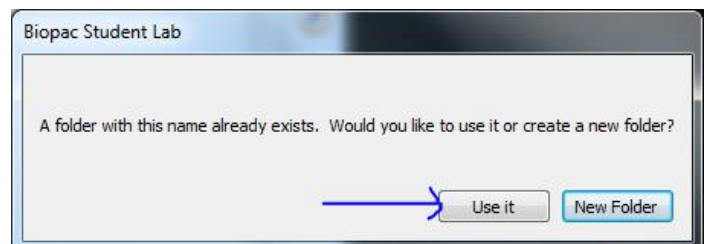
2) Double-click on lesson L01:



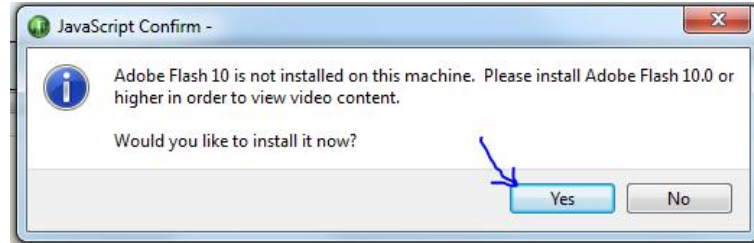
3) Click "OK" to choose the "NoName" default:



4) If told that the folder already exists, click "Use it":

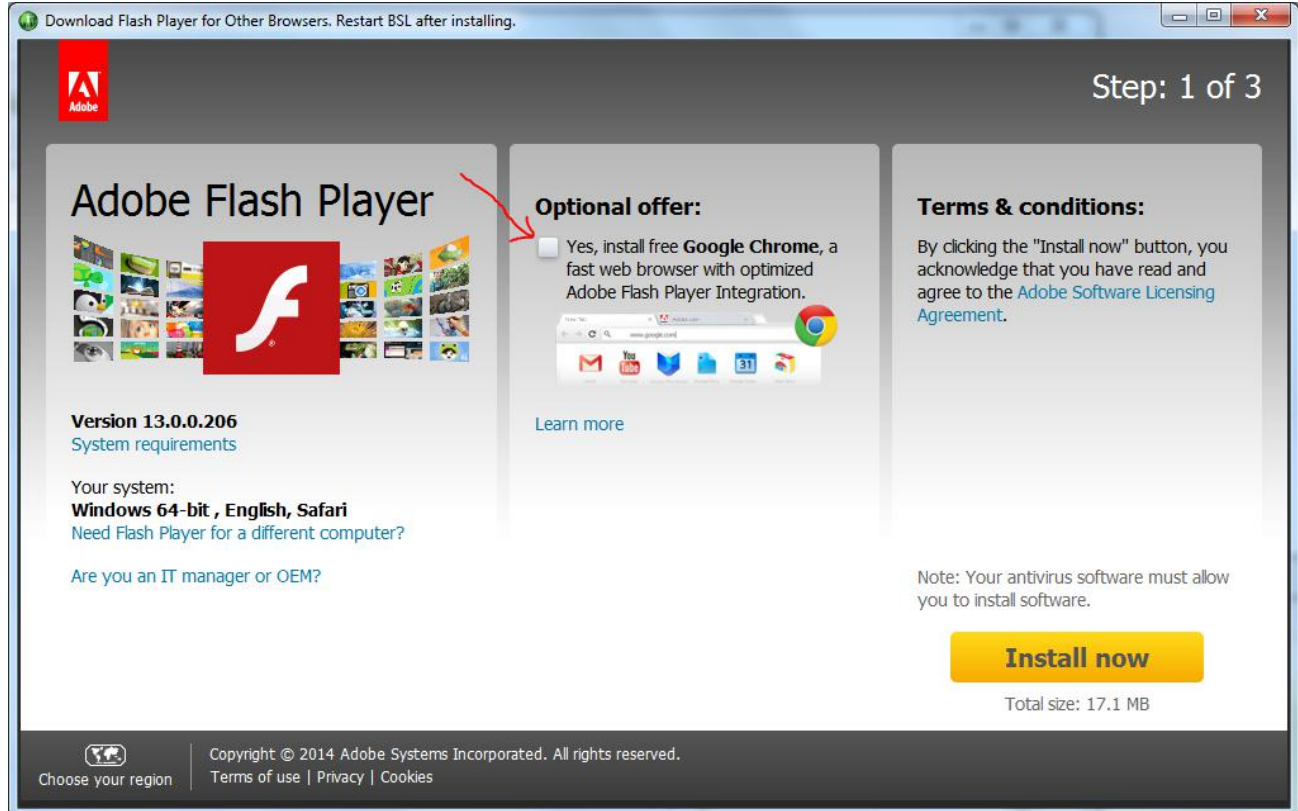


5) When you see the message alerting you that Adobe Flash is not installed on the computer, click "Yes" to indicate you want to install it:

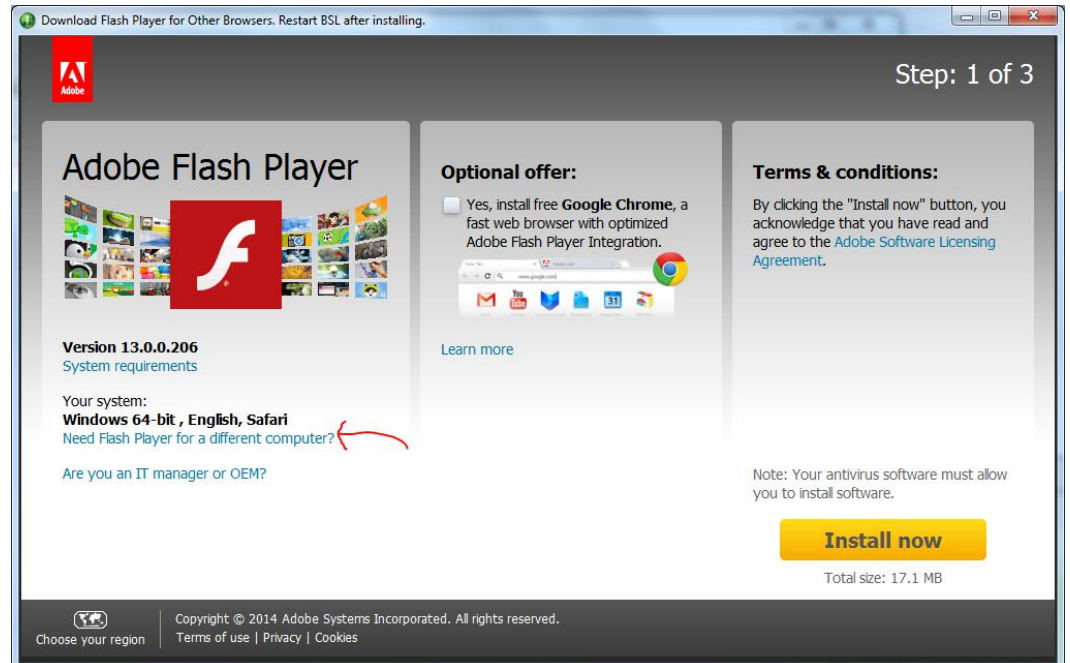


Note: All images in steps 1-5 were created by us, so we control them completely. The following images are screenshots from the Adobe website. The site interacts with your computer and provides different screens depending on your type of computer and what software you already have installed upon it. The following images are hence only examples. The intent here is to provide sufficient information that you will be able to install what needs to be installed for your computer, but the images you will see and questions you may be asked may not precisely match what is presented here.

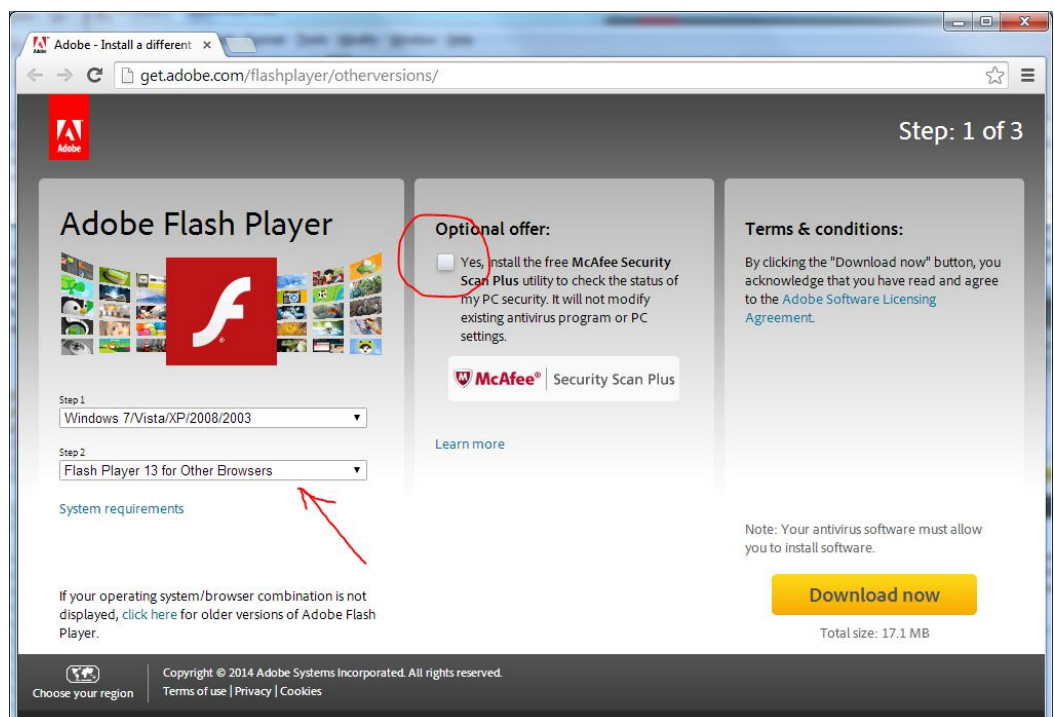
6) A new window will open up (possibly behind the BIOPAC Student Lab window). That window is part of a web client built into BIOPAC Student Labs. The content may look something like the image below. Most probably you will want to uncheck any boxes asking if you want to install optional software as you are installing the Flash Player:



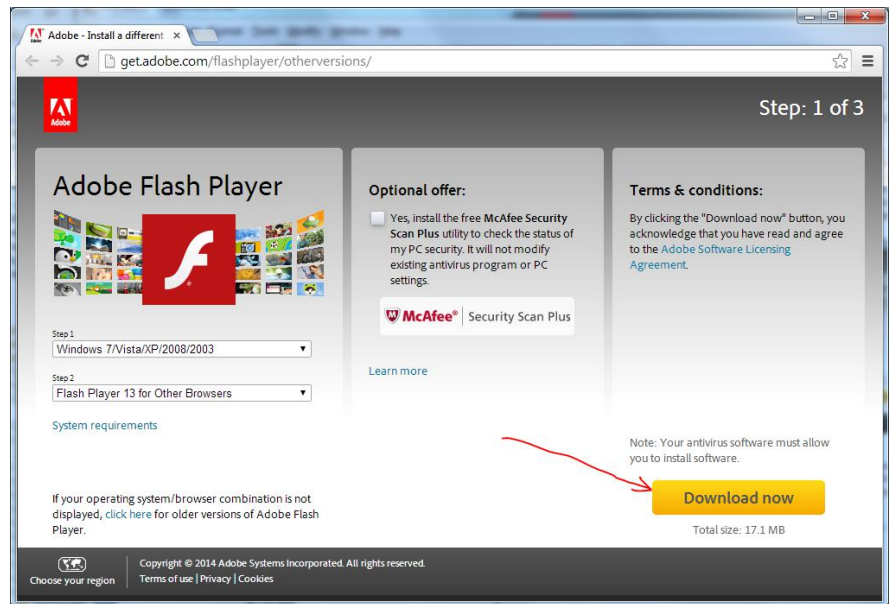
7) If you click "Install Now", the Adobe website will tell your computer to open your default web browser and attempt to install the plugin for that browser. It is possible to go down this path and still install the plugin for BIOPAC Student labs, but the more direct path will be to click the link indicating you wish to install the plugin for a different computer (this is an idiosyncrasy of Adobe's attempt to be helpful... the attempt succeeds in most cases, but here it is confusing and not under our control):



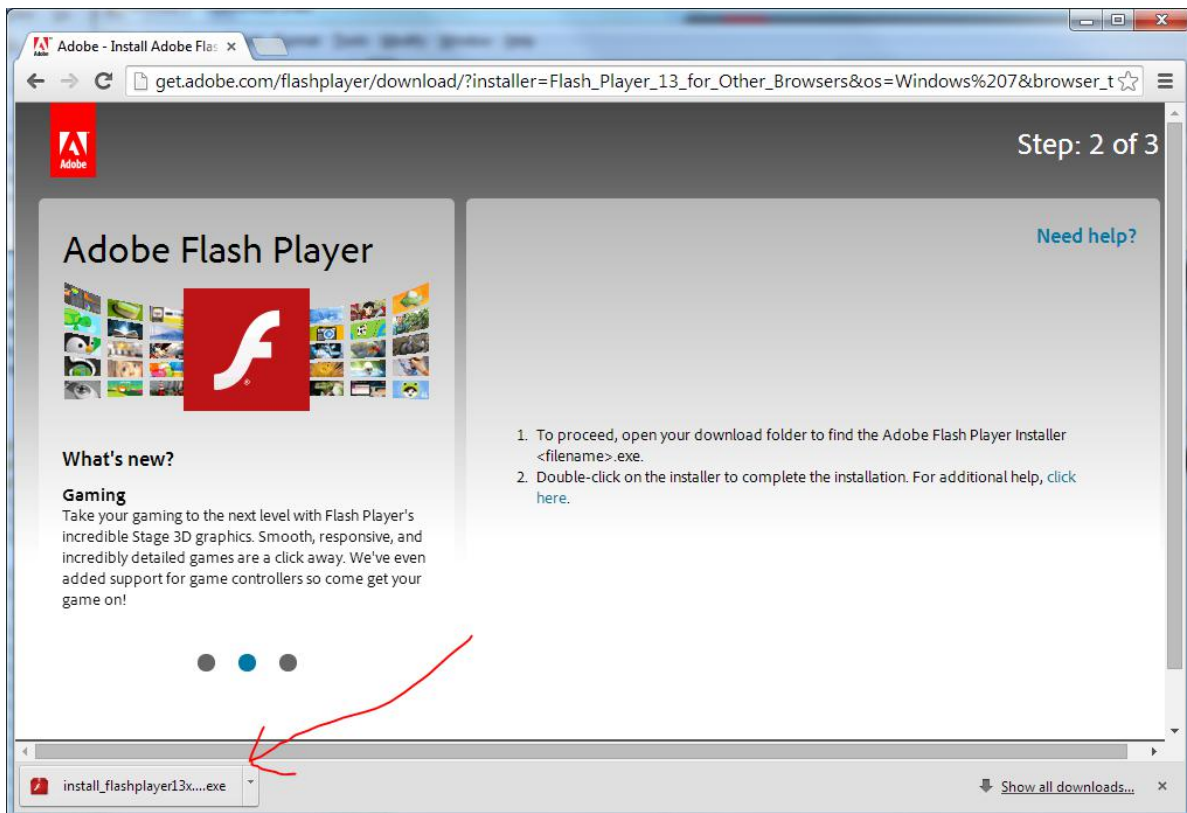
8) Adobe will again open your default web browser, but now it should present you with pulldown menus allowing you to specify your operating system and what browser you want to install for. You should select the operating system of the computer that you are installing the software on, and make sure that you indicate you wish to install for other browsers. Probably you will also want to uncheck the box asking you about optional software:



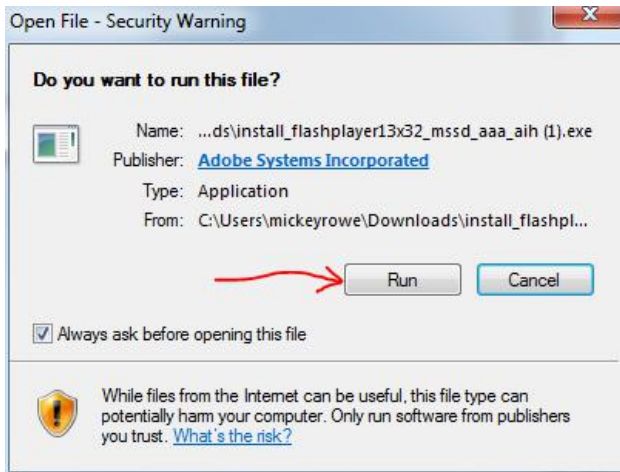
9) With these selections made, click the "Download Now" button:



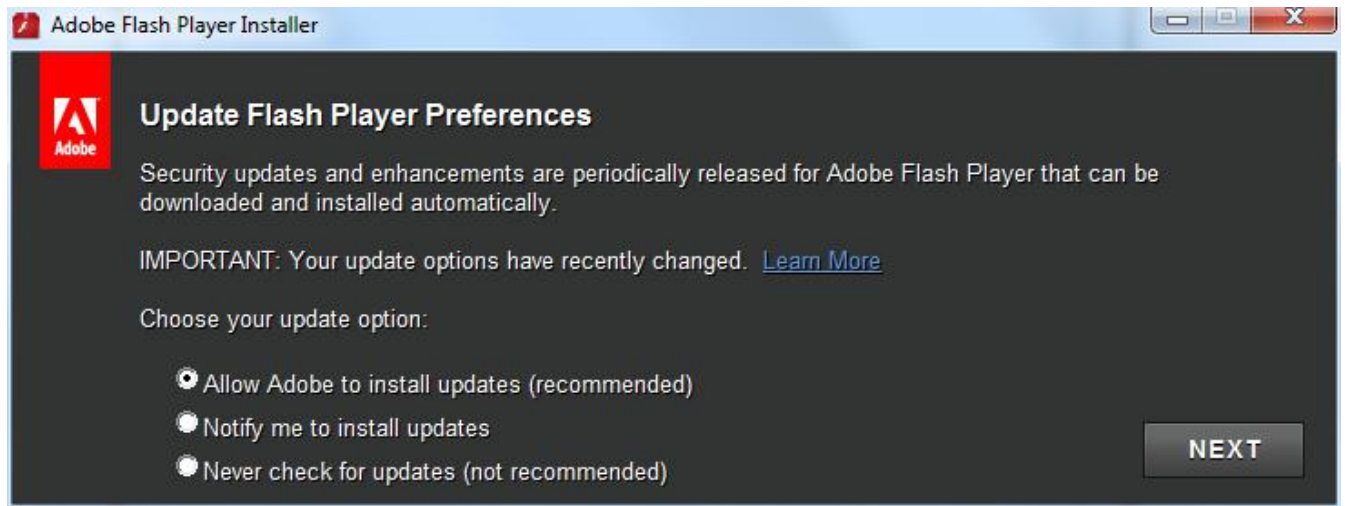
10) The website will instruct you to double-click to run the installer; the place to click will most likely be in the lower left corner:



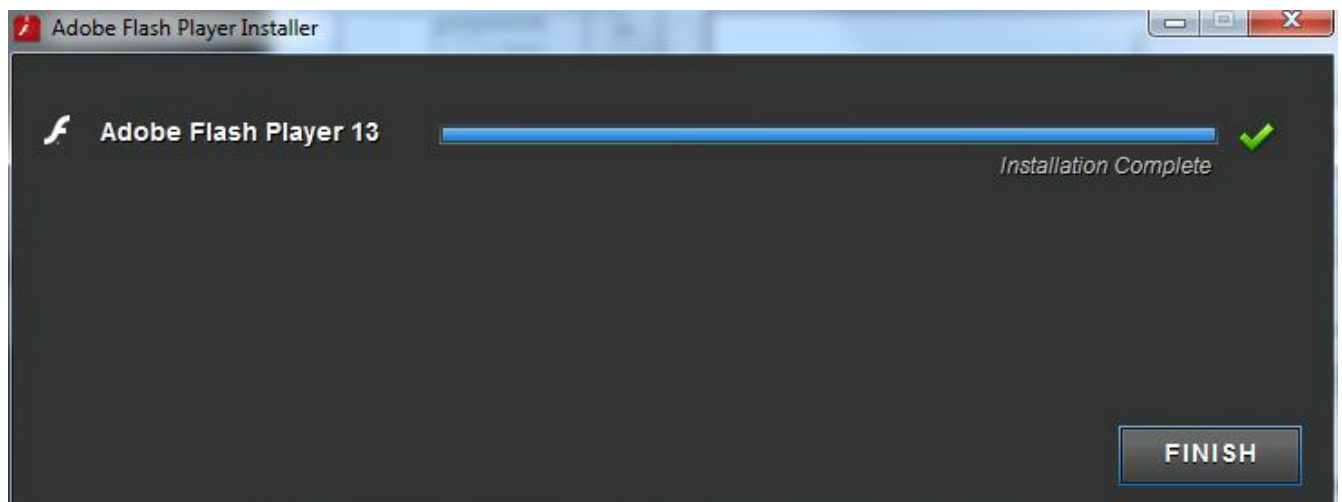
11) Your operating system will probably then ask if you wish to run the software; click "Run":



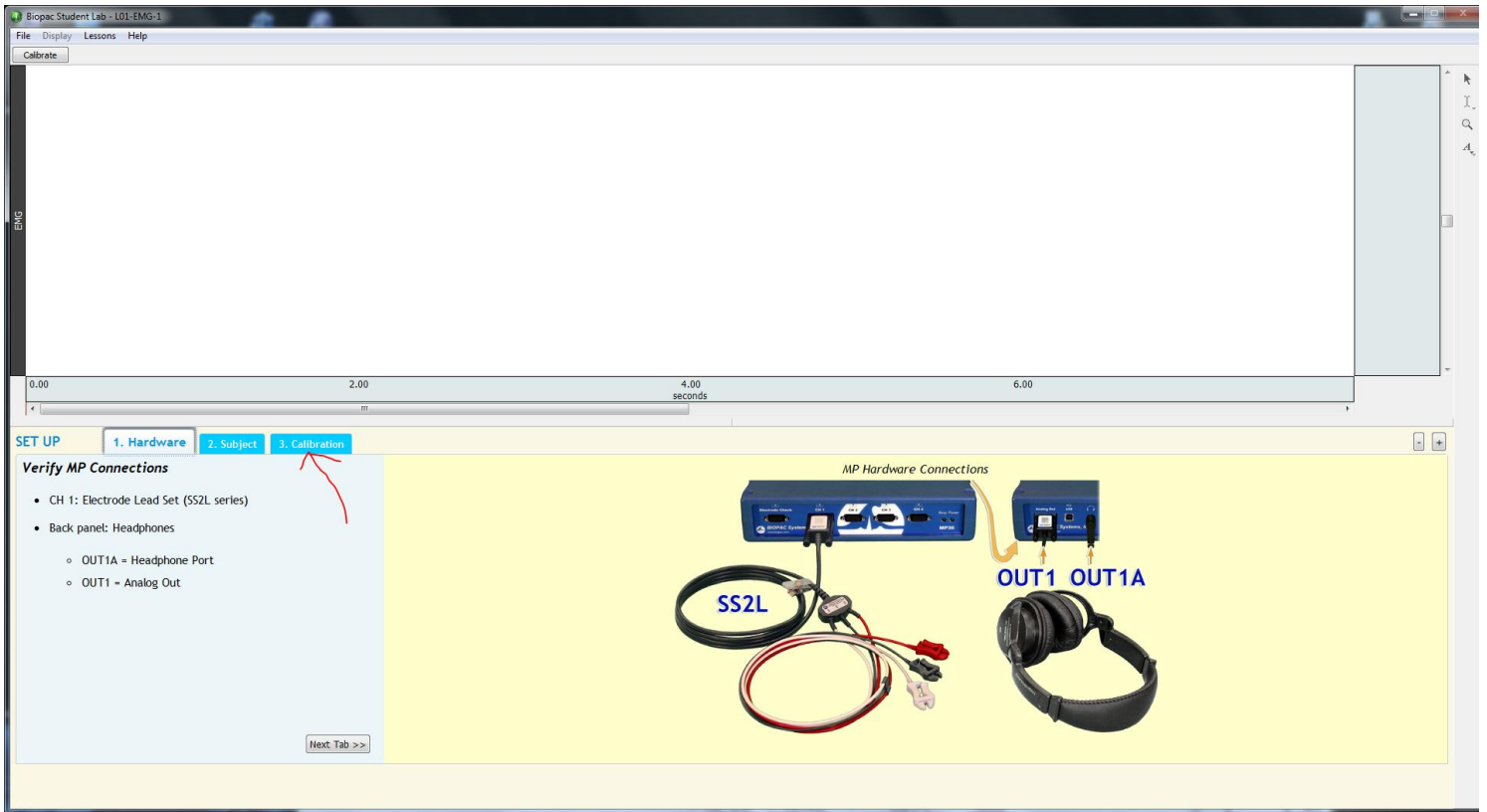
12) The installer may give you some choices. It is not likely that your answers will impact the ability of the player to work in BIOPAC Student Labs, so the default answers should be OK:



13) If all goes well, this should be the lucky step you reach indicating success. Click "Finish"



14) Click the "Calibration" tab in BIOPAC Student Labs to bring up a video to test:



15) Click the play button to test. If it works, you are done.

