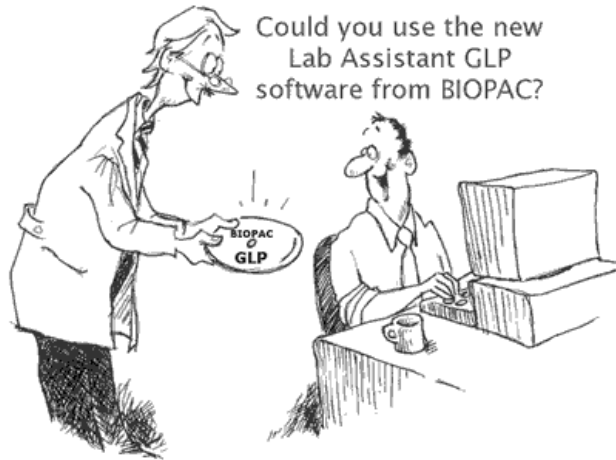


Lab Assistant GLP Software for AcqKnowledge



Lab Assistant GLP Features include

- Good Laboratory Practice compliant
- Security Management
- Customizable Software Solutions
- Advanced Audit Trails
- Standard Operating Procedures
- Increased Productivity
- Validation and Algorithm Disclosure
- Flexible solutions for a variety of applications

AcqKnowledge Lab Assistant

GLP compliant software...and more!



Easy to use
tracking
dialogs

The AcqKnowledge **Lab Assistant** software promotes lab efficiency and full compliance with the Food and Drug Administration's (FDA) Good Laboratory Practice (GLP) requirements—21 CFR Part 11.

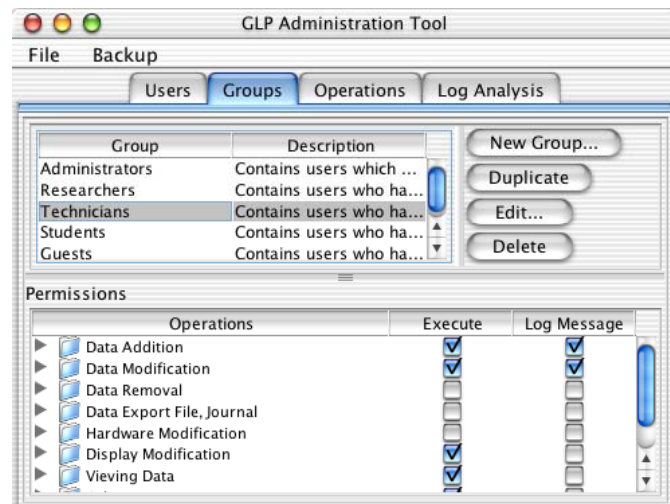
But the **Lab Assistant** is *much more* than a GLP solution—it provides any lab with improved security, data integrity, configurable user interface, and also Standard Operating Procedure (SOP) checking.

The **Lab Assistant** GLP software is customizable and will provide some or all of the above features, dependent upon your requirements. The **Lab Assistant** has no impact on the functionality or usability of the AcqKnowledge software, unless you choose to restrict individual users from certain aspects of the program.

Security Management

At the heart of the system is a user-friendly Security Manager that allows a System Administrator to create user accounts and set privileges for each user.

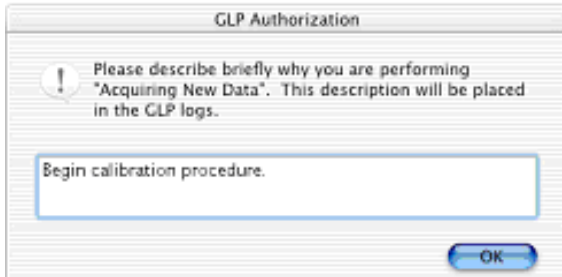
If you have several MP units connected to a computer, the Security Manager will monitor each of the different MP units and provide users with access to each system, via their login information. As you continue to add personnel and MP Systems, your Network Administrator simply has to create additional accounts. The security system operates on either a stand-alone computer or on a network server to secure each MP System connected to the computer.



Increased Productivity & Flexible Solutions

Use AcqKnowledge and the new Lab Assistant for a flexible environment that meets the challenges of the modern lab and help standardize procedures for increased efficiency. Includes digital support files that are accessible when using the software and a wide range of downloadable Application Notes. Use Template files to incorporate SOP instructions to further reduce errors and avoid ambiguity.

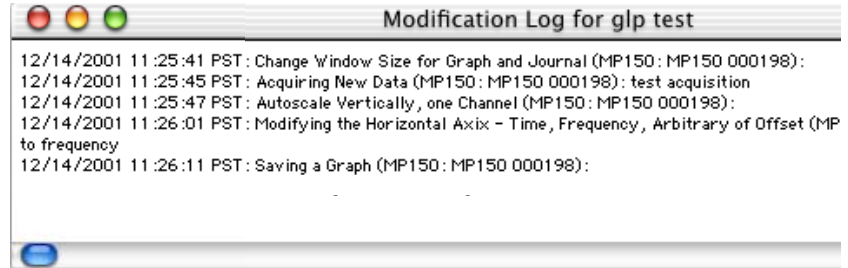
Standard Operating Procedures



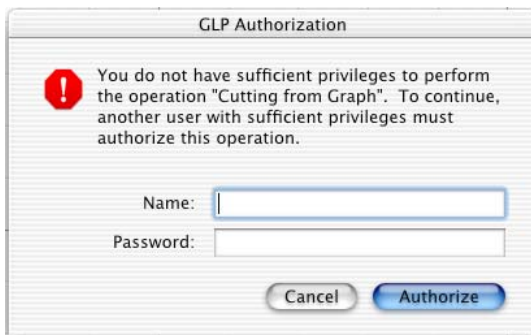
The **Lab Assistant's** prompting features will ensure that users are following the SOP. At certain critical points in the SOP, you can tell the **Lab Assistant** to prompt the user for feedback concerning the operation. For example, if the SOP asks the user to take a measurement at a certain time interval, you can tell the **Lab Assistant** to request a prompt from the user when the measurement is taken. The user will have to enter a comment telling the **Lab Assistant** about the measurement (or any procedure). All comments are shown in the audit trail and confirm that the SOP was adhered to.

Advanced Audit Trails

The **Lab Assistant** monitors every keystroke and mouse click in a completely unobtrusive fashion. Users will never know that the audit trail is being created, unless you choose to activate the **Lab Assistant's** powerful prompting tool.



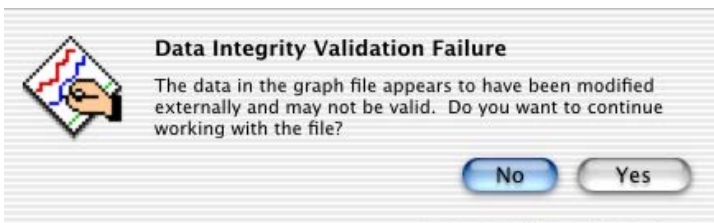
Customizable Software Solutions



The **Lab Assistant** provides a wonderful array of customization tools that control the features and functions of the *AcqKnowledge* software. This makes it easy to train staff and ensure that they are following SOPs, and restrict access for functions that are inappropriate in a GLP environment.

Different projects demand different software features, so customization allows users to have completely different software feature sets—even if they are the same grade level. Access and tracking for all software functions are established when the user account is created, and then that user can only use the software as specified for that account.

Validation and Algorithm Disclosure



BIOPAC develops innovative and powerful software and hardware solutions for the modern laboratory. Our software is accurate and reliable — we spend a lot of time testing and monitoring our systems. As a result of this testing, we also include validation files for measurement calculations. The validation file provides you with a sample data set and describes how to validate software measurement results against Excel's values for the same calculations. In addition

to the validation file, we also provide algorithm formulas, which enables you to validate the software using manual calculation techniques.

BIOPAC Systems, Inc. is registered to ISO 9001:2000

