



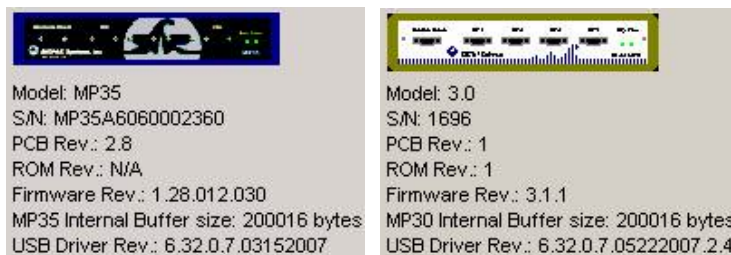
BSL Driver Guide

Administrator Privileges Required

42 Aero Camino, Goleta, CA 93117
 Tel (805) 685-0066 | Fax (805) 685-0067
 info@biopac.com | www.biopac.com

Select a driver installation category

- A** First-time driver installation for MP35 or MP30 — page 2
- B** Update MP35 driver — page 5
- C** Update MP30 driver — page 7



Troubleshooting — see page 9.

After installing the driver, confirm that the **Firmware** and **USB Driver Rev.** are current:

1. Launch the BSL *PRO* software.
2. Click the Help menu and select *About Biopac Student Lab*.

See [Support > Updates](#) on the **BIOPAC** web site to check for an update and confirm the current version numbers.

Help menu > About dialogs display version info

MP3X Model	Windows OS	
	XP or Vista 32-bit	Vista 64-bit
MP35A Driver:	6.32.0.7.03152007	6.64.0.7.03152007
Firmware:	1.28.012.030	1.28.012.030
MP35 Driver:	6.32.0.7.03152007	6.64.0.7.03152007
Firmware:	1.26.042.030	1.26.042.030
MP30 Driver:	6.32.0.7.05222007.2.4	6.64.0.7.05222007.2.4
Firmware:	3.1.1	3.1.1

Current firmware and driver versions as of June 2007

IMPORTANT!

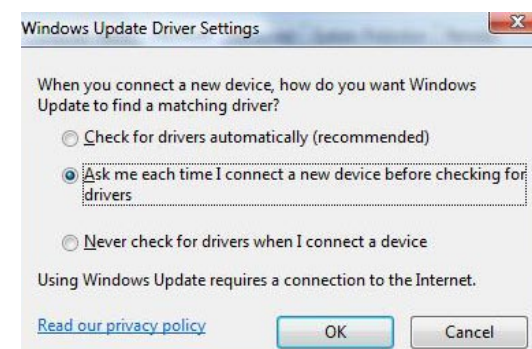
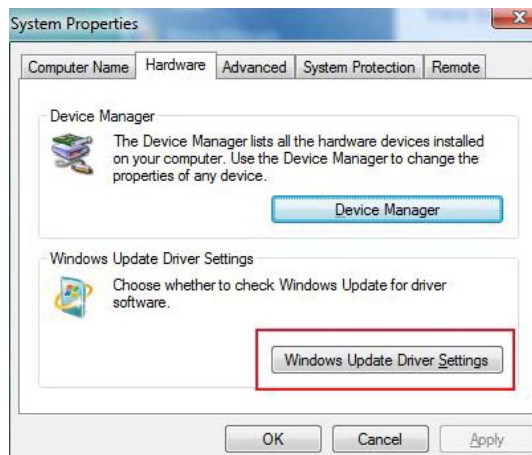
Attention Windows Vista Users!

Vista uses a default setting that checks for drivers automatically, which may not be optimum for all users based on the system specifications (MP unit, software version, etc.). Under the default setting, the option to install the driver manually from a user-defined location is not presented unless the network connection is disabled or the network cable unplugged so if there is an open internet connection, the latest “signed” driver will automatically be downloaded and installed from Microsoft.

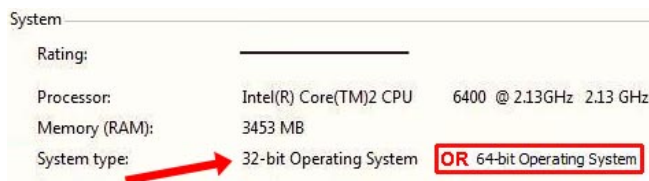
→ The default should be changed to ensure correct driver installation for the system as specified by BIOPAC, *not* Microsoft.

Driver installation options are located in Vista. Instead of being presented by default in the "Found New Hardware" screen (as in XP), they're buried in the System Properties.

1. Select Windows Start > Control Panel > System.
2. Select "Advanced System Settings" from the "Tasks" pane at the left of the System screen.
3. Click the "Hardware" tab and select "Windows Update Driver Settings."
4. Select the “Ask me...” option and click OK.



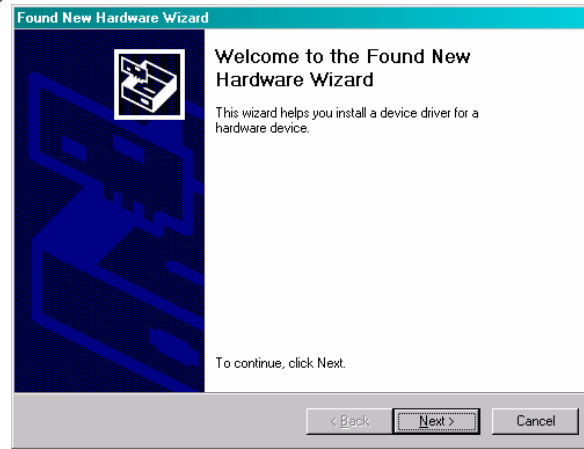
To check the operating system bit level, generate the [Control Panel > System Info](#) dialog (sample shown at right) with the keyboard combo



First time installation: MP35 or MP30 Driver

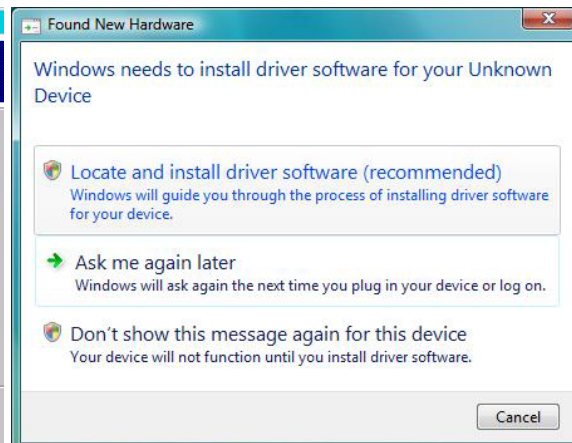
Note: Screen images are from Windows XP but content should be similar for other Windows operating systems.

1. Power on the MP3X data acquisition unit.
2. Connect the MP3X to a USB port.
3. Wait for the “Found New Hardware Wizard” to be generated.



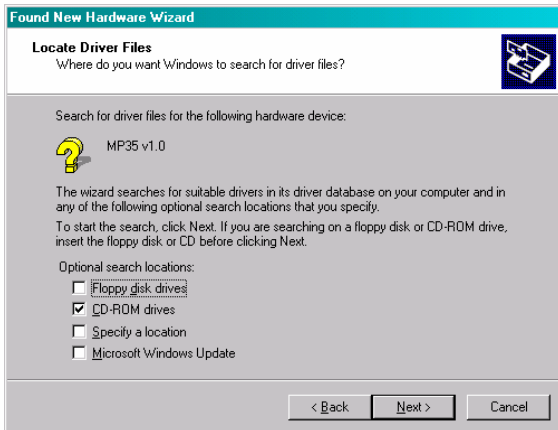
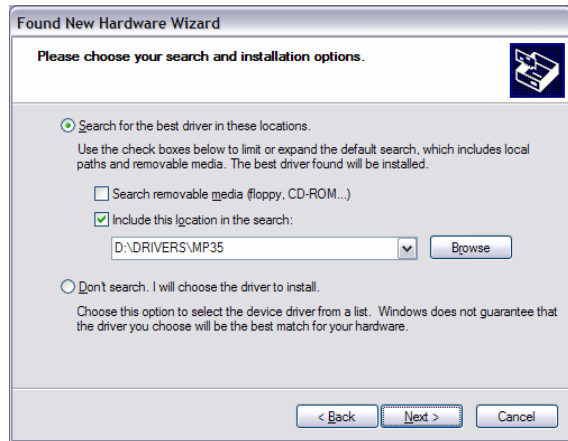
4. Select “No, not this time” if prompted (under Windows XP) and click “Next.”
5. Select the option that allows you to locate and then install and click “Next.”

- The exact wording for this option varies based on the OS but it should be similar to “Install from a list...” or “Display a list...” or “Locate and Install.”



6. Select the option that allows you to browse or specify a location.

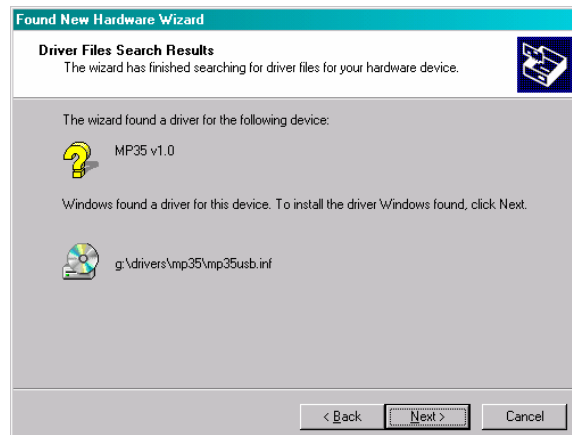
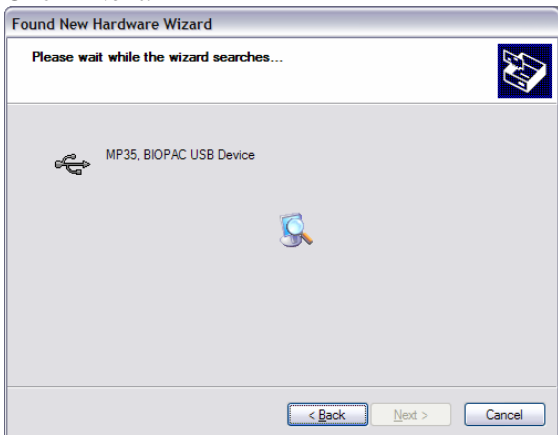
- The exact wording for this option varies based on the OS but it should be similar to “Search for...” or browse to or specify a CD-ROM drive.



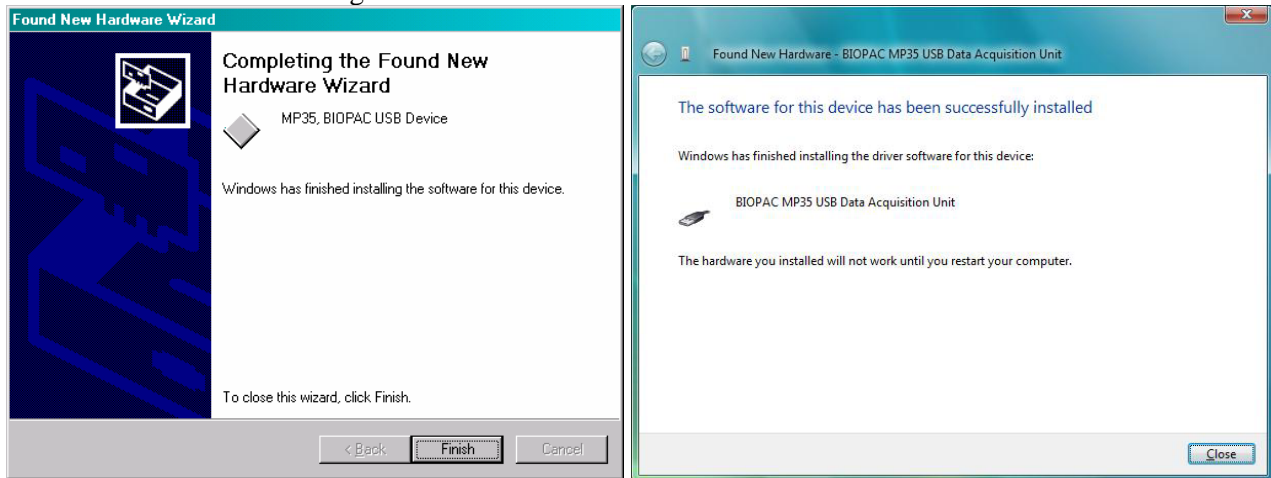
7. Locate the Driver. Default locations are:

- BSL 3.7.2 release: **Program Files\Biopac Student Lab\DRIVERS\MP35** or **MP30(USB1W)**
 - If your computer has a Windows® Vista 64-bit processor, you must select the 64-bit driver in the folder **Program Files\Biopac Student Lab\DRIVERS\64-bit Driver\...**
- BSL 3.7.1 and below: **Program Files\Biopac Student Lab\BSL 3.7\DRIVERS\MP35** or **MP30(USB1W)**

8. Click “Next.”



9. Wait for a confirmation dialog then click “Finish” or “Close.”



10. Launch the BSL *PRO* software.
11. Check for the green status indicator in the software window next to the “Start” button.

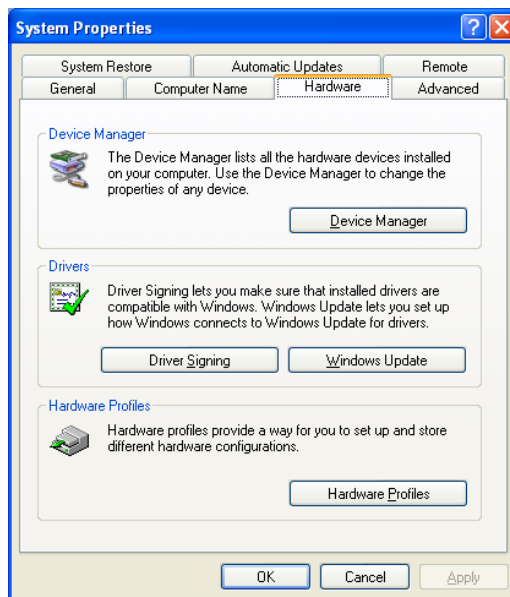
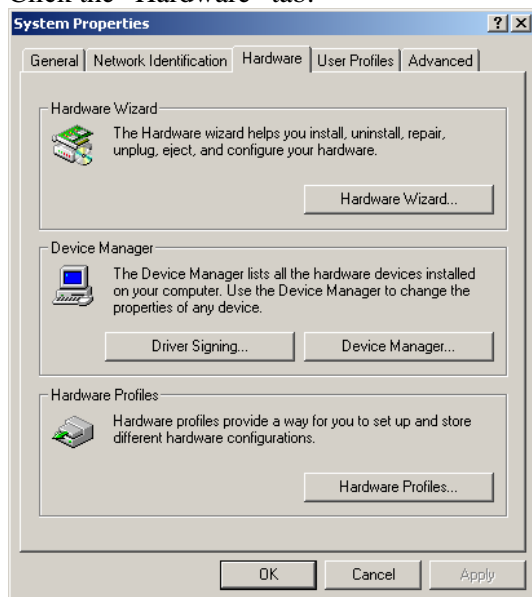


12. Select **Help > About Biopac Student Lab** and confirm the current driver is installed (see page 2 for details).
- If communication is not established or the driver is not current, see Trouble Shooting (page 9).

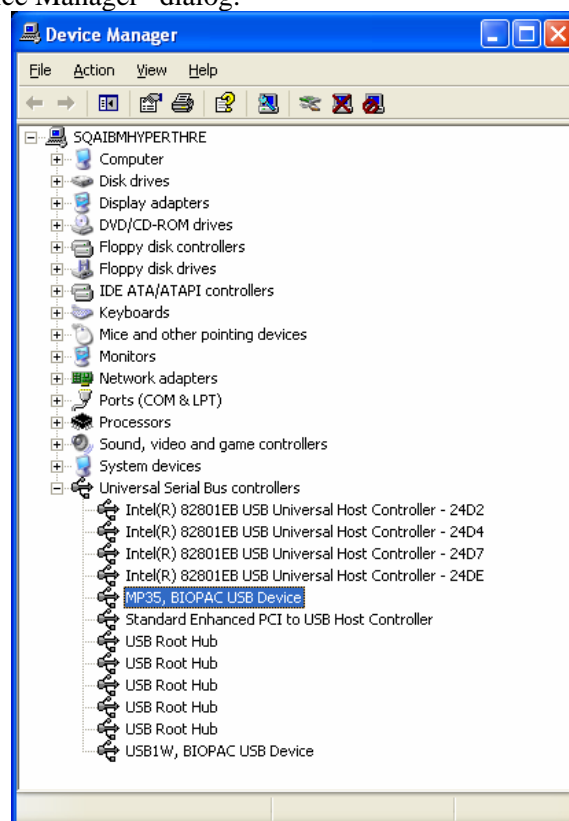
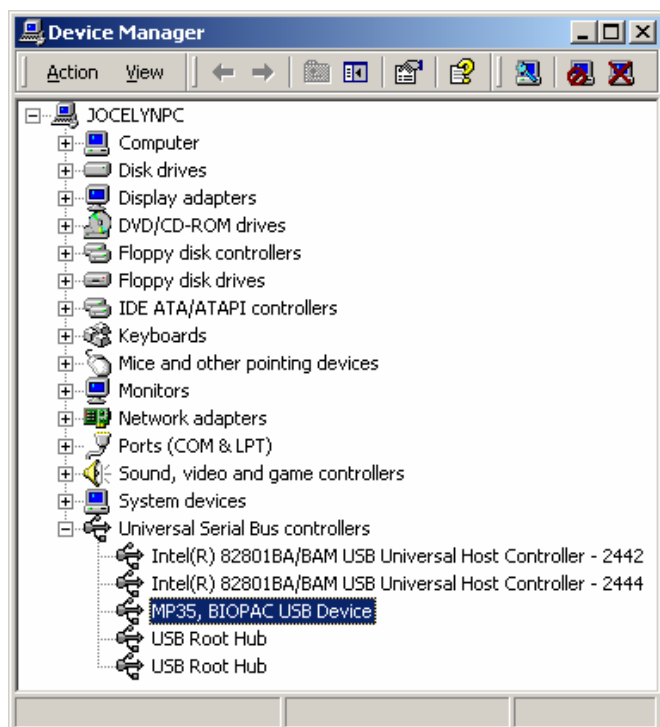
B Update to a newer MP35 Driver (includes MP30 to MP35)

Note: Screen images are from Windows XP but content should be similar for other Windows operating systems.

1. Make sure that the MP35 is powered and connected to the computer.
2. Right-click the “My Computer” icon on the desktop and select “Properties” to generate the System Properties dialog.
3. Click the “Hardware” tab.



4. Click the “Device Manager” button to generate the “Device Manager” dialog.

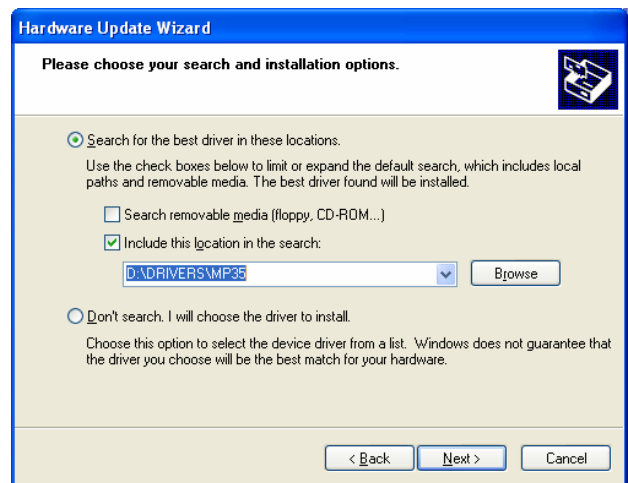
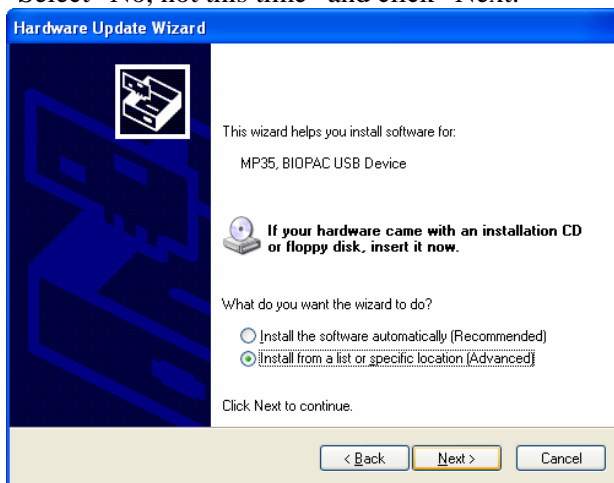


5. Expand the “Universal Serial Bus controllers” listing and select “MP35, BIOPAC USB Device.”
6. Select Update Driver.”
 - Windows XP: Select the “Action” menu and then select “Update Driver...”

7. Wait for the “Update Wizard” to be generated.



8. Select “No, not this time” and click “Next.”



9. Select “Install from a list or specific location (Advanced)” and click “Next.”

10. Select “Search for the best driver in these locations.”

11. Uncheck “Search removable media (floppy, CD-ROM...)”

12. Check “Include this location in the search:”

13. Click “Browse.”

14. Locate the Driver; it should be [BSL INSTALLATION CD]\DRIVERS\MP35.

15. Click “OK.”

16. Click “Next.”

17. Wait for installation to complete.

18. Launch the BSL PRO software.

19. Check for the green status indicator in the software window next to the “Start” button.



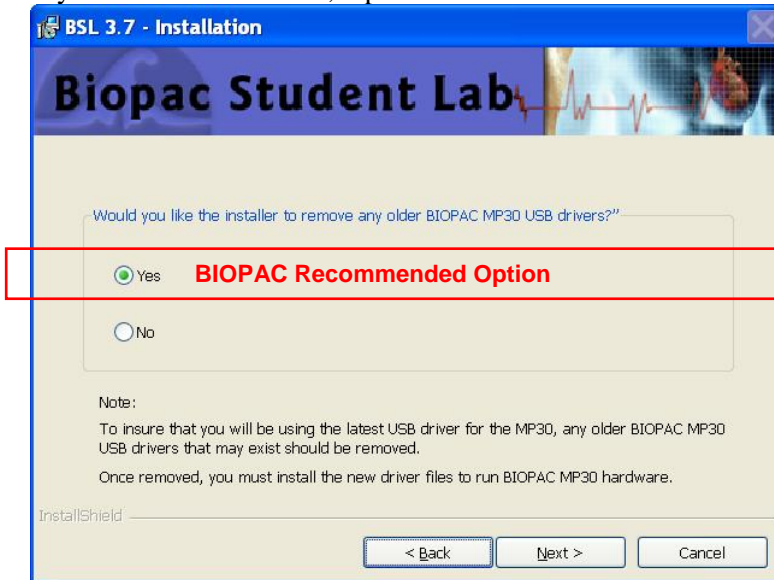
20. Select **Help > About Biopac Student Lab** and confirm the current driver is installed (see page 2 for details).

- If communication is not established or the driver is not current, see *Trouble Shooting* (page 9).

C Update to a newer MP30 Driver

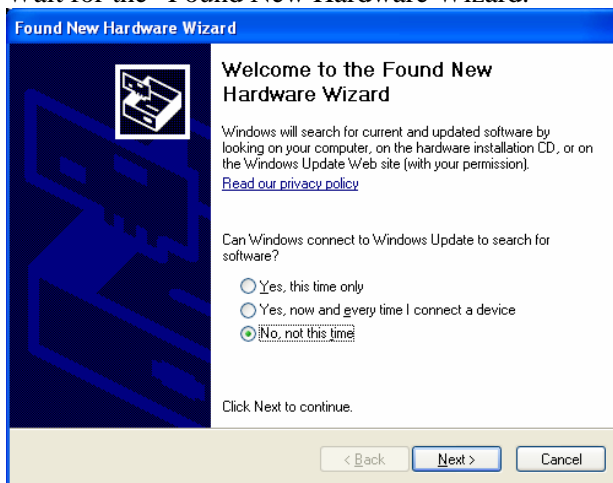
Note: Screen images are from Windows XP but content should be similar for other Windows operating systems.

1. Allow the Biopac Student Lab installer to remove any older MP30 USB driver files.
 - During software installation, you need to select **YES** when prompted to remove drivers. If you did not select YES, repeat BSL software installation and choose YES at this prompt.

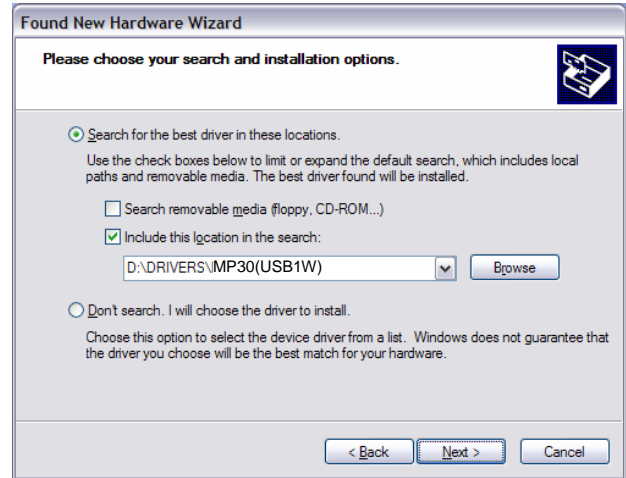


If you select “No” at this prompt during installation, you will need to manually remove the drivers before BSL 3.7 will run. See Troubleshooting (page 9).

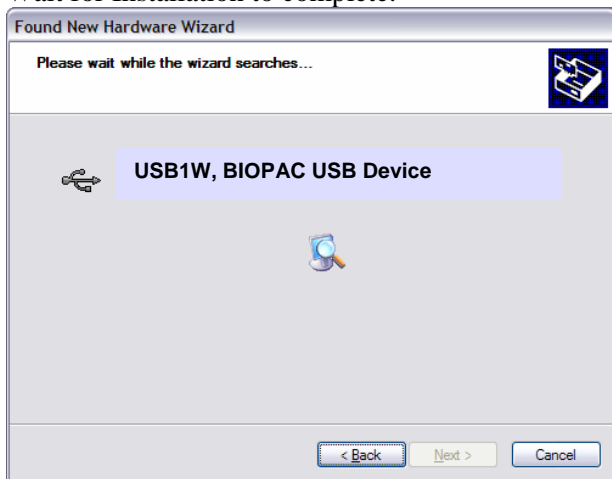
2. Connect the MP30 to the USB1W.
3. Power on the MP30.
4. Connect the USB1W to the USB port.
5. Wait for the “Found New Hardware Wizard.”



6. Select “No, not this time” and click “Next.”



7. Select “Install from a list or specific location (Advanced)” and click “Next.”
8. Select “Search for the best driver in these locations.”
9. Uncheck “Search removable media (floppy, CD-ROM...).”
10. Check “Include this location in the search:”
11. Click “Browse.”
12. Locate the Driver folder, which should be [BSL INSTALLATION CD]\DRIVERS\MP30(USB1W).
13. Click “OK.”
14. Click “Next.”
15. Wait for Installation to complete.



16. Launch the BSL *PRO* software.
17. Check for the green status indicator in the software window next to the “Start” button.



18. Select **Help > About Biopac Student Lab** and confirm the current driver is installed (see page 2 for details).
- If communication is not established or the driver is not current, see *Trouble Shooting* (page 9).

Trouble Shooting

If, **after following the procedures for updating drivers**, you are unable to establish communication with the MP3X and the computer or the driver files have not updated correctly to the current version:

1. Check power and cable connections.
2. Turn off the MP3X.
3. Turn off the computer (do not use Restart).
4. Turn on the computer.
5. Turn on the MP3X (only after you have turned on the computer).
6. Wait (2-15 seconds) for the “Busy” light on the MP3X to go out.
7. Launch the BSL *PRO* software.
8. Check for green status indicator in the software window.
9. If communication is not established, manually uninstall the driver as described below.



- **Only manually uninstall drivers if all other troubleshooting options failed.**



Windows XP:

- A. Turn the MP3X unit off.
- B. Disconnect the USB cable from the computer’s USB port (leave connected to the MP3X unit).
- C. Launch the uninstaller.
 - MP35 users: “**MP35USB_UNINSTALLER.exe**”
 - MP30 users: “**USB1W_UNINSTALLER.exe**”
- D. Click “Uninstall Driver” and follow the prompts in the program.
- E. To install the current MP3X Driver, follow **First time installation** (page 2).

The uninstaller is on the BIOPAC Installation CD or you can download it at www.biopac.com

Windows Vista:

BIOPAC MP35 and USB1W uninstaller utilities are not supported under Windows Vista so the driver must be manually uninstalled via the Device Manager.

- A. Open the **Device Manager**:
 - Select Windows Start > Control Panel > Device Manager *or*
 - Use the keyboard combo  +  and then click the Hardware tab > Device Manager
- B. Select the BIOPAC device.
 - The MP unit must be ON for the device to be displayed in the list of Universal Serial Bus controllers.
- C. Choose Action > **Uninstall** (or right-click select Uninstall).
- D. Click “**Browse my computer...**”
- E. Browse to the drive with the BIOPAC CD or the location of a driver downloaded from www.biopac.com.
- F. Select the compatible driver option and click **Next**.

