

Instructions

Firmware Upgrade MPMS100A-1 or MPMS100A-2
Micro Pressure Measurement System

PREPARATION

First make sure you need to upgrade the control unit.

Connect a transducer and let the control unit start as usual. Once “zero baseline” is performed you may go in to the menu “setup” and check “system information”. The third line from the top will display the current firmware version. If you are already running the latest version you should not proceed with the upgrade process.

The installer is made in LabView and requires the Runtime engine 7.1 to be installed. You also need the USB driver for Samba 200 installed. This is delivered on a CD that came with the system.

Please make sure your unit is working correctly with the “Samba 200 SP”. This ensures that you have all the software you need already installed.

The installer is delivered as a ZIP file containing the application file (.exe) and the data file (.s).



Samba 200 FW upgrade.exe



SAMBA_200_FW.S
S-file
238 kB

Unpack the installer and verify that the two files are present.

Make sure to connect the power supply in addition to the USB cable. You should never run the installer on battery power alone or with any other application running on your computer. An interruption during the upgrade can make the control unit unable to start, requiring you to return it to Samba Sensors for repair.

UPGRADE

You should not have any transducers connected during the upgrade, but you need one later to verify the upgrade

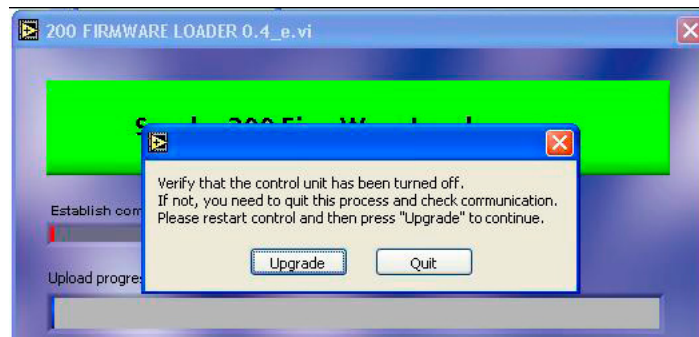
Run the installer by double clicking on the application icon.

The following dialog will appear.



When the text “NO TRANSUDCERS FOUND !!” is displayed on the control unit, press “Unit ready”. The installer now configures the control unit to receive new firmware and then turns it off.

If the unit is not turned off there is a communication error.



Once the control unit is turned back on you need to click the “upgrade” button within 10 seconds. If not, the unit will switch back to standard mode and run the old firmware after about 60 seconds.



There is a 10 second delay to ensure the control unit has enough time to start before attempting to download the new firmware. Once communication is verified the new firmware is uploaded automatically. The transfer takes about a minute.

MAKE SURE THIS PROCESS IS NOT INTERRUPTED IN ANY WAY!!



The new firmware is downloaded and the control unit now restarts with the new program.

Connect a transducer and let the control unit start as usual. Once “zero baseline” is performed you may go in to the menu “setup” and check “system information”. The third line from the top will display the current firmware version. Verify that the value is updated.